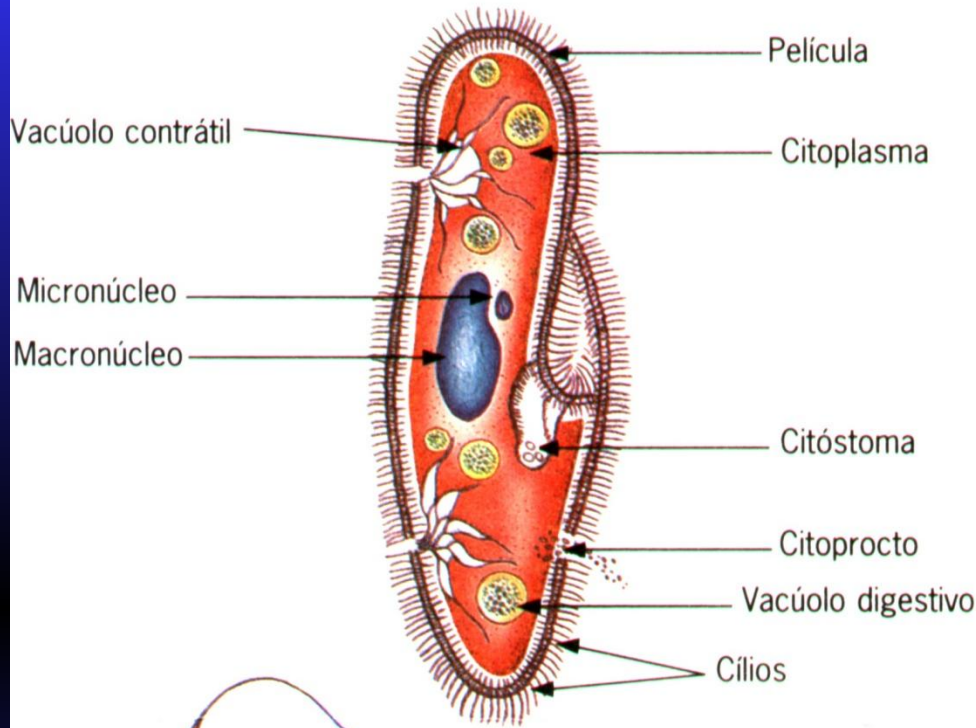
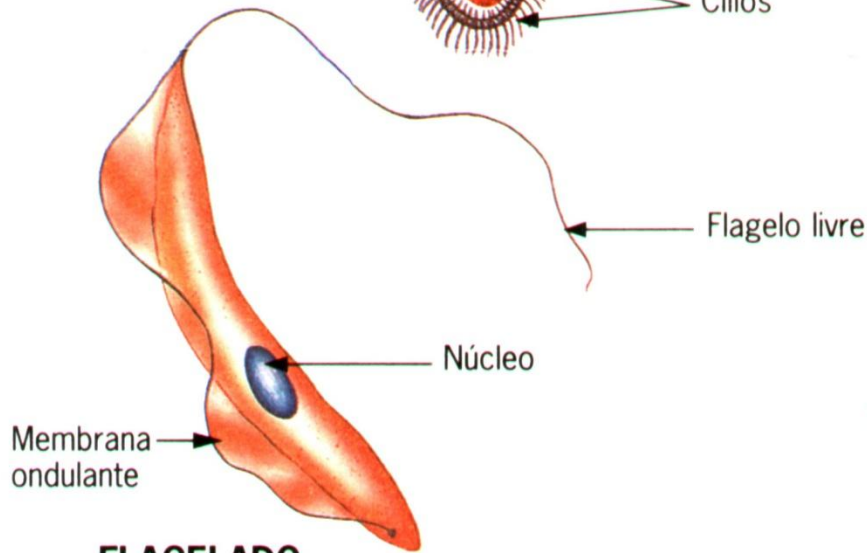
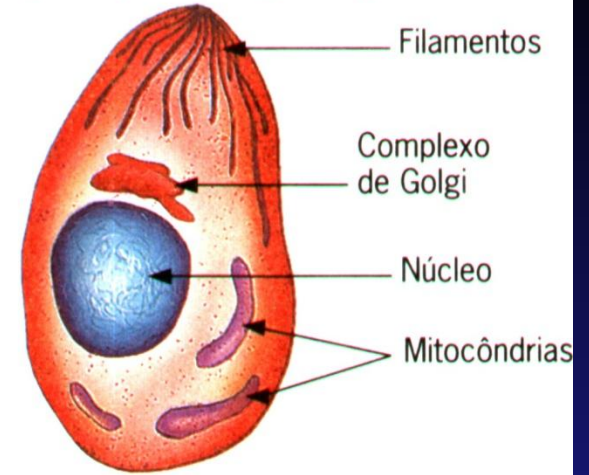


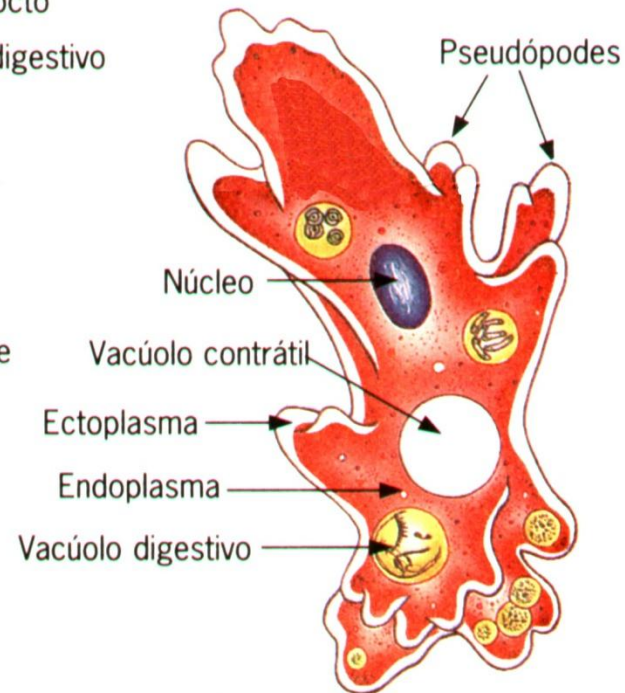
CILIADO (*Paramecium*)



ESPOROZOÁRIO (*Toxoplasma gondii*)



FLAGELADO (*Trypanosoma cruzi*)



RIZÓPODE (ameba)

PROTOZOÁRIOS

- REINO PROTISTA
- FILO PROTOZOA
- CLASSES: RIZÓPODA (AMEBAS)
 - CILIATA (PARAMÉCIOS)
 - FLAGELATA (TRIPANOSSOMOS)
 - SPOROZOA (PLASMODIOS)

Entamoeba histolytica

Trophozoite

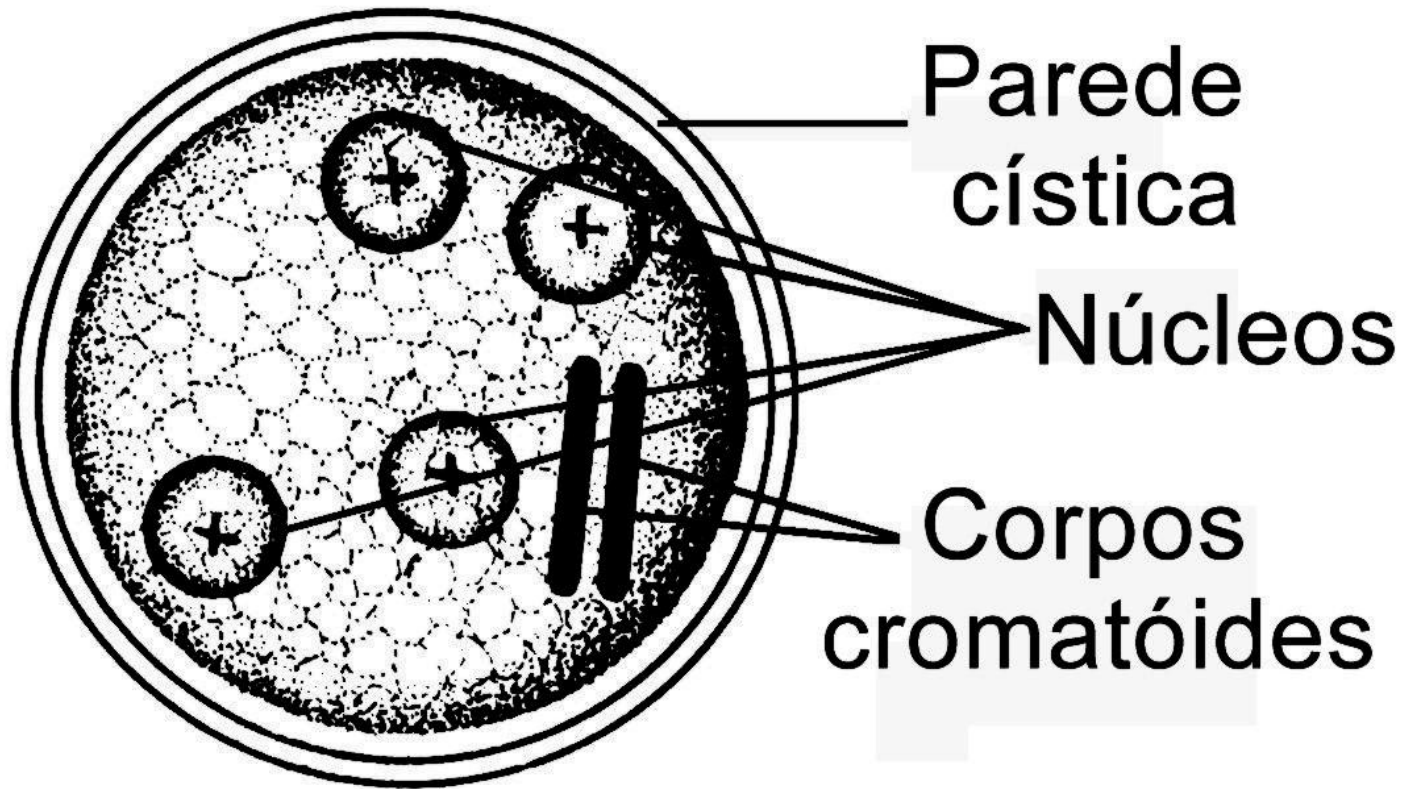
Cyst

10µm

10µm

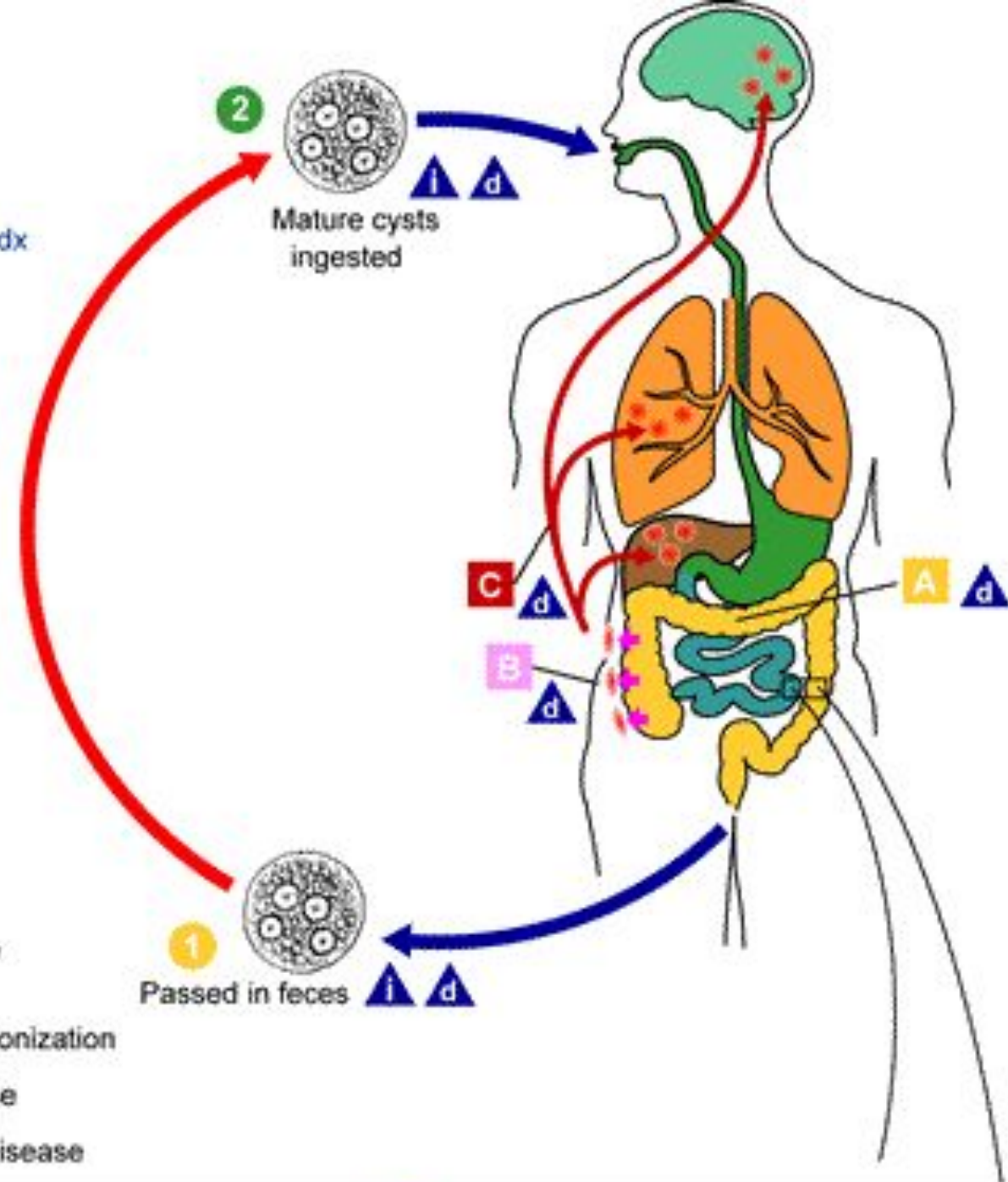


ENCISTAMENTO





SAFER • HEALTHIER • PEOPLE™
<http://www.dpd.cdc.gov/dpdx>



2
Mature cysts ingested
i d

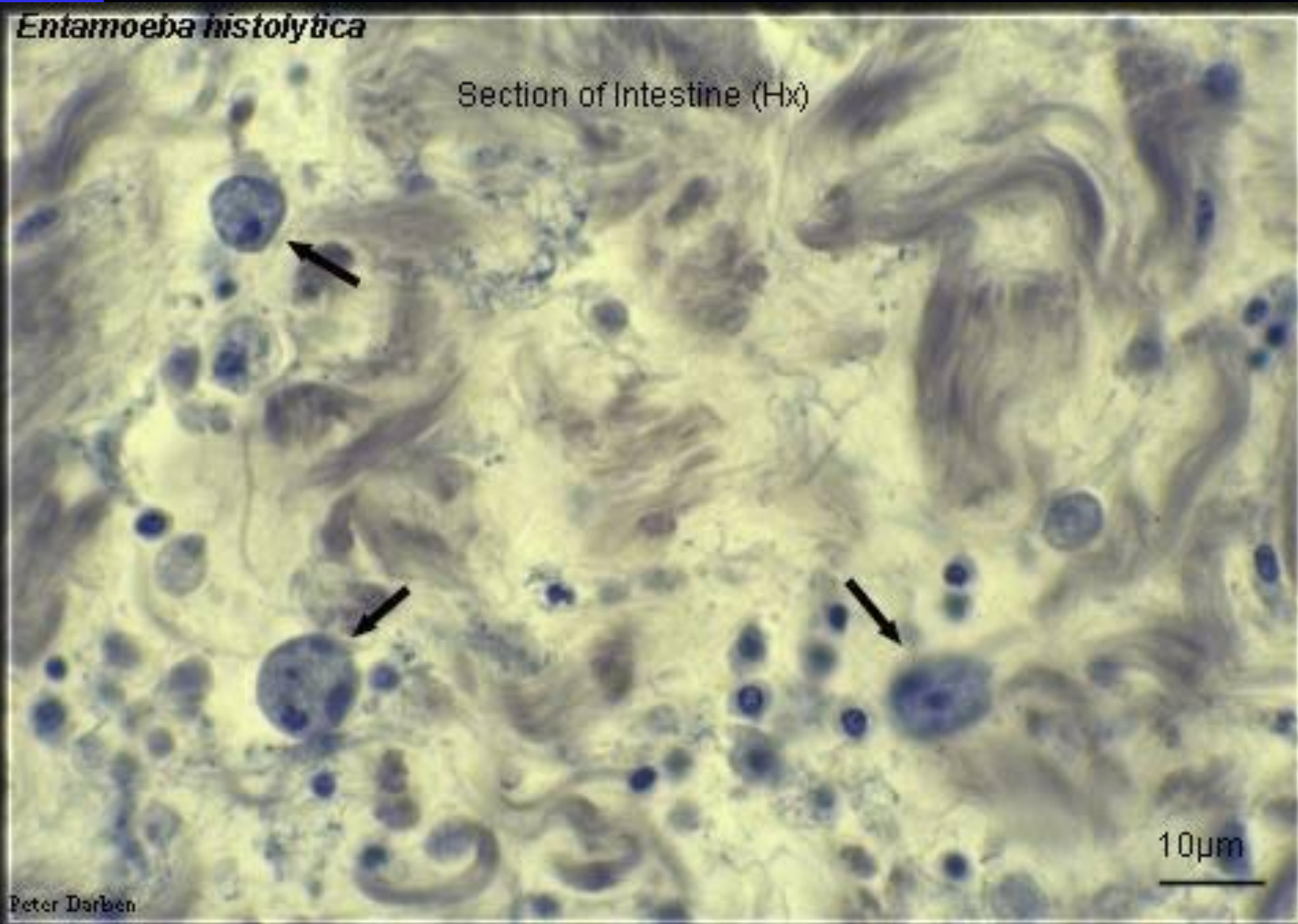
C d
A d
B d

1
Passed in feces
i d

- i** = Infective Stage
- d** = Diagnostic Stage
- A** = Noninvasive Colonization
- B** = Intestinal Disease
- C** = Extraintestinal Disease

Entamoeba histolytica

Section of Intestine (Hx)

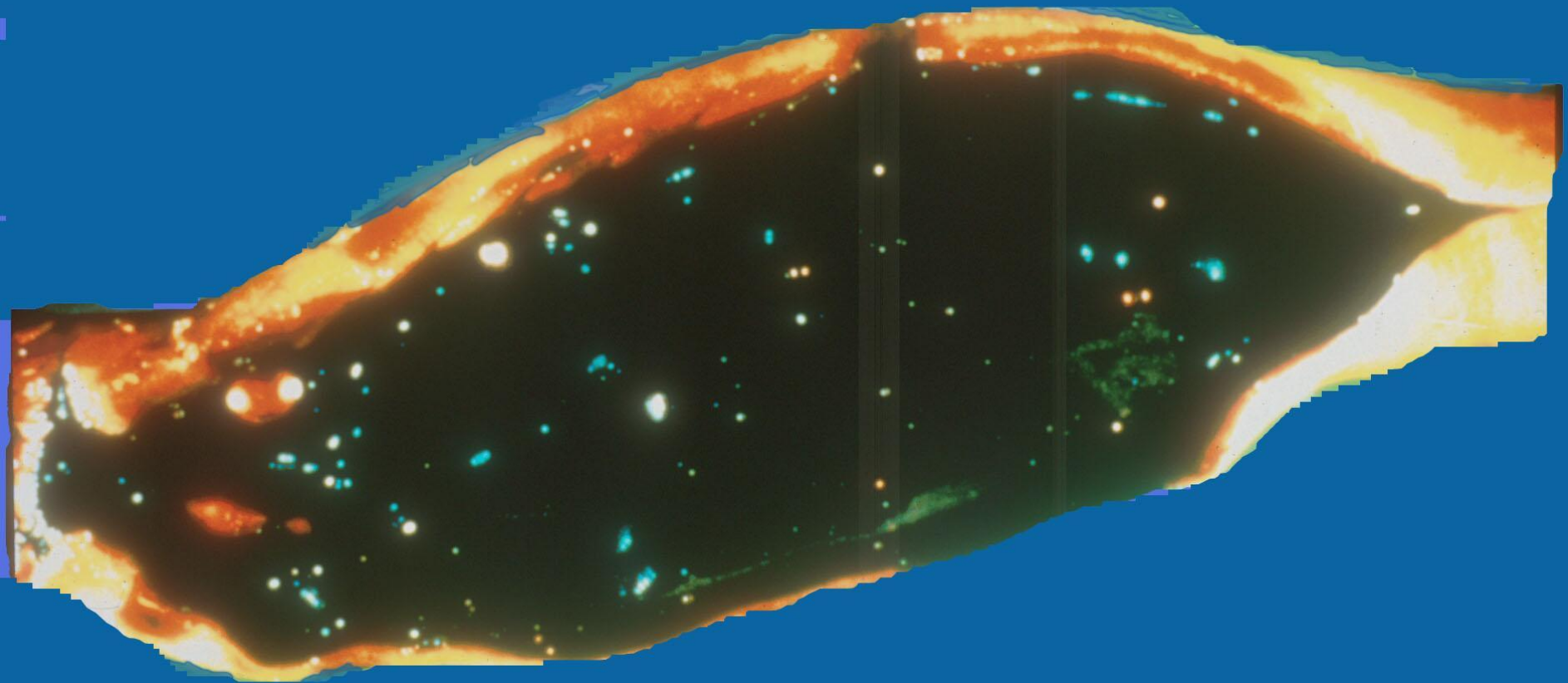


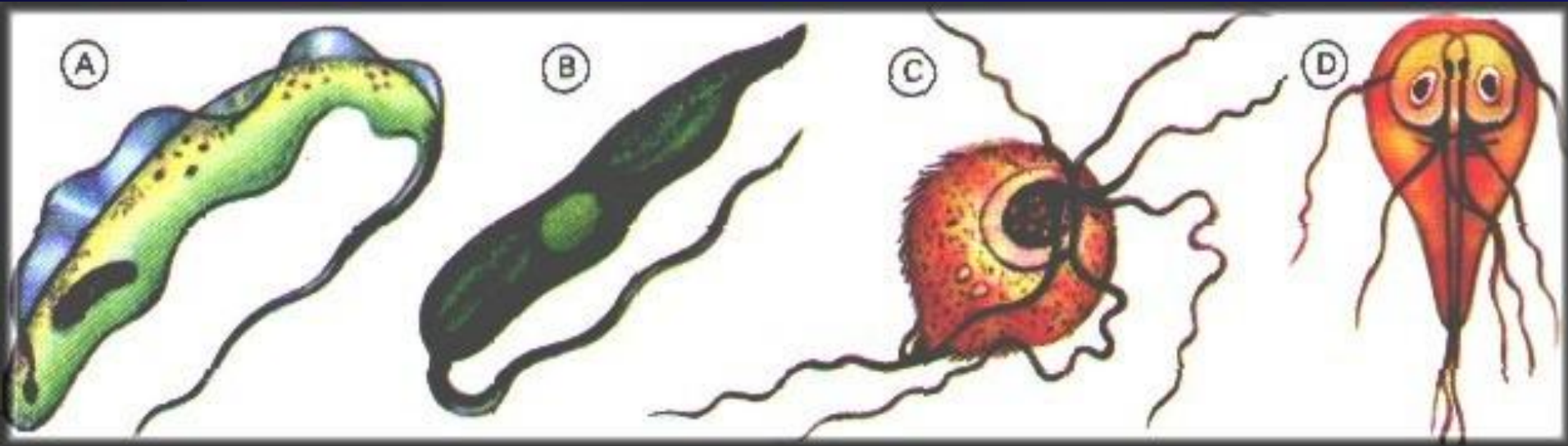


abscess

intestinal
epithelium

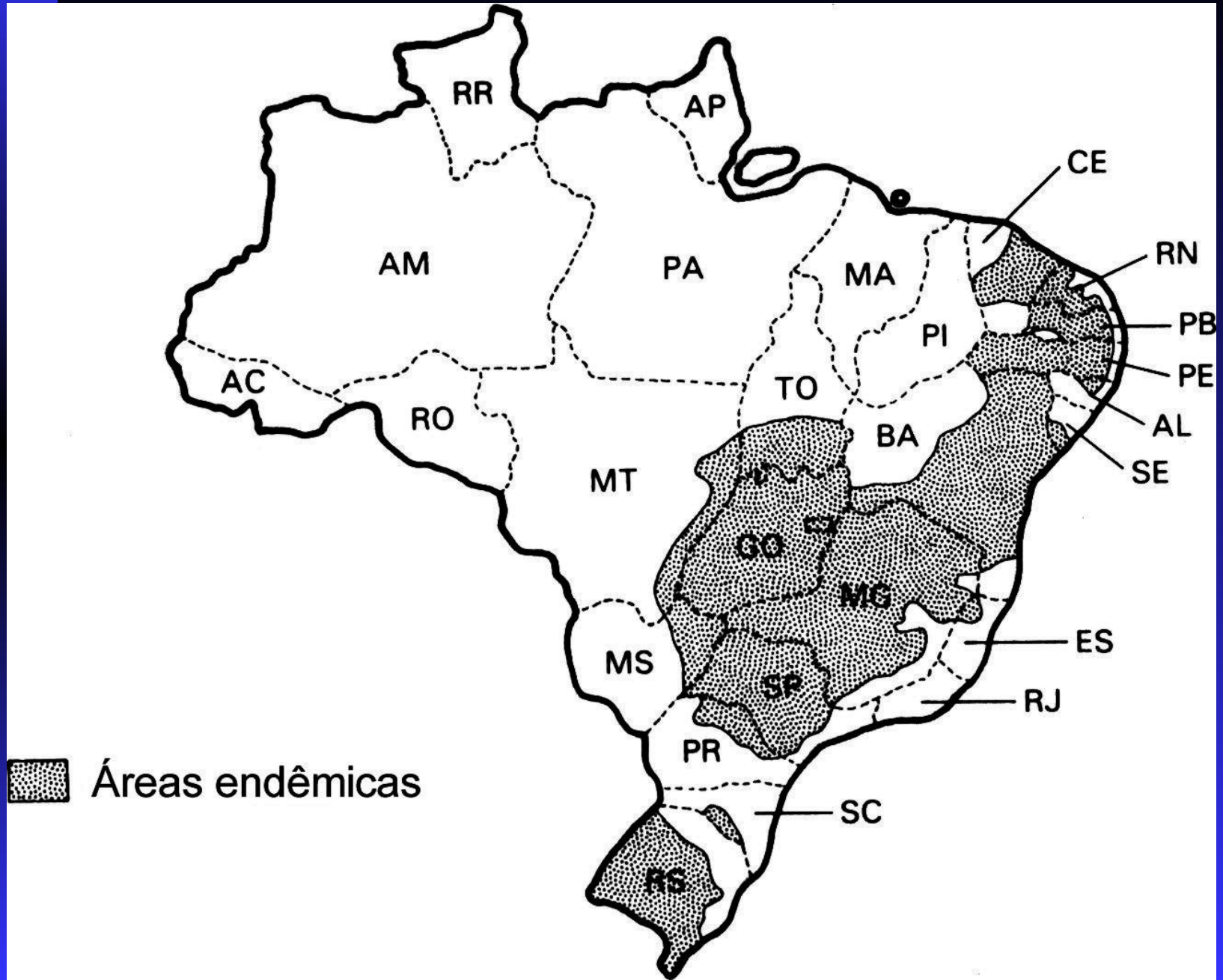
lumen







Áreas endêmicas



Triatoma infestans

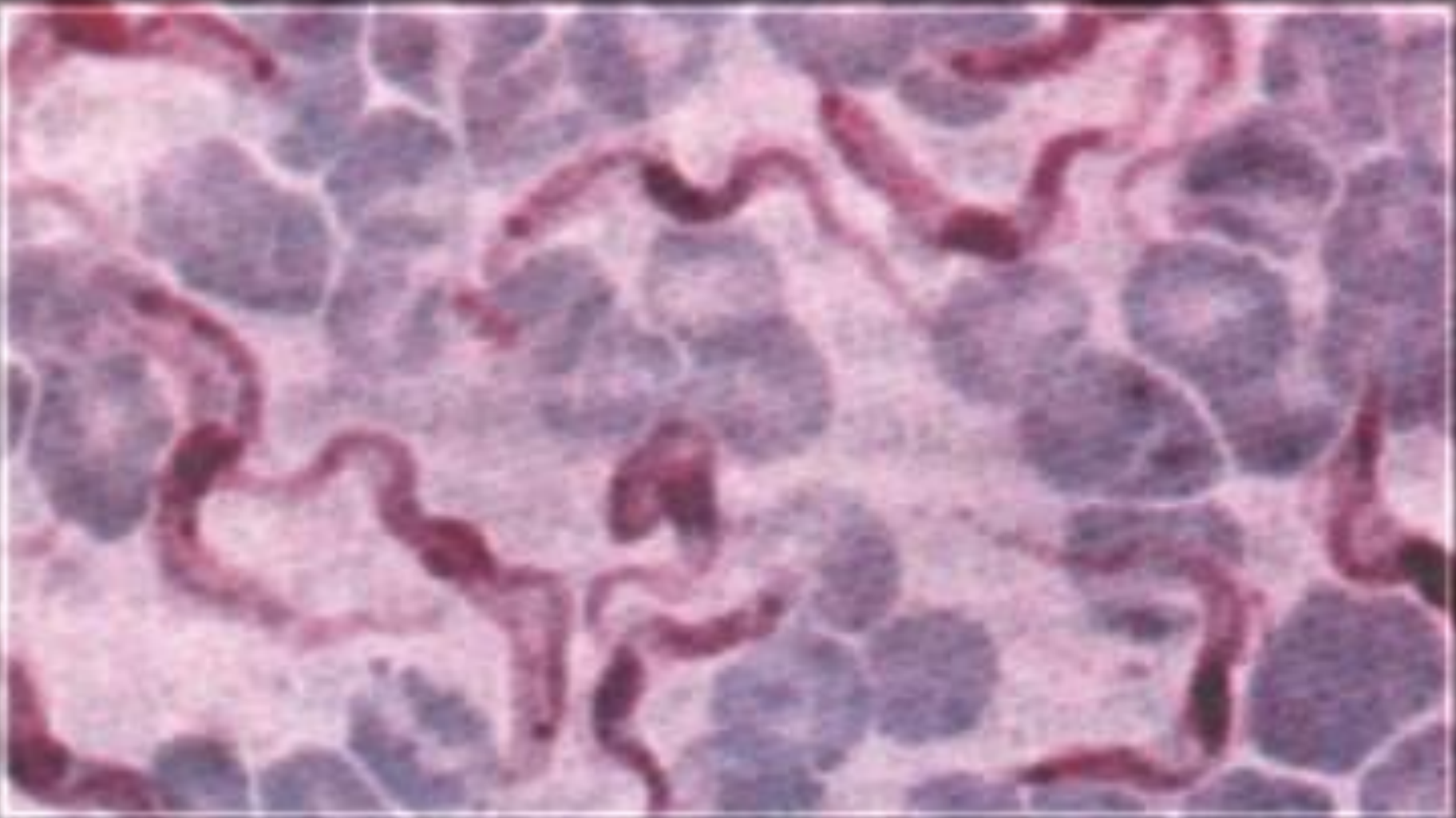


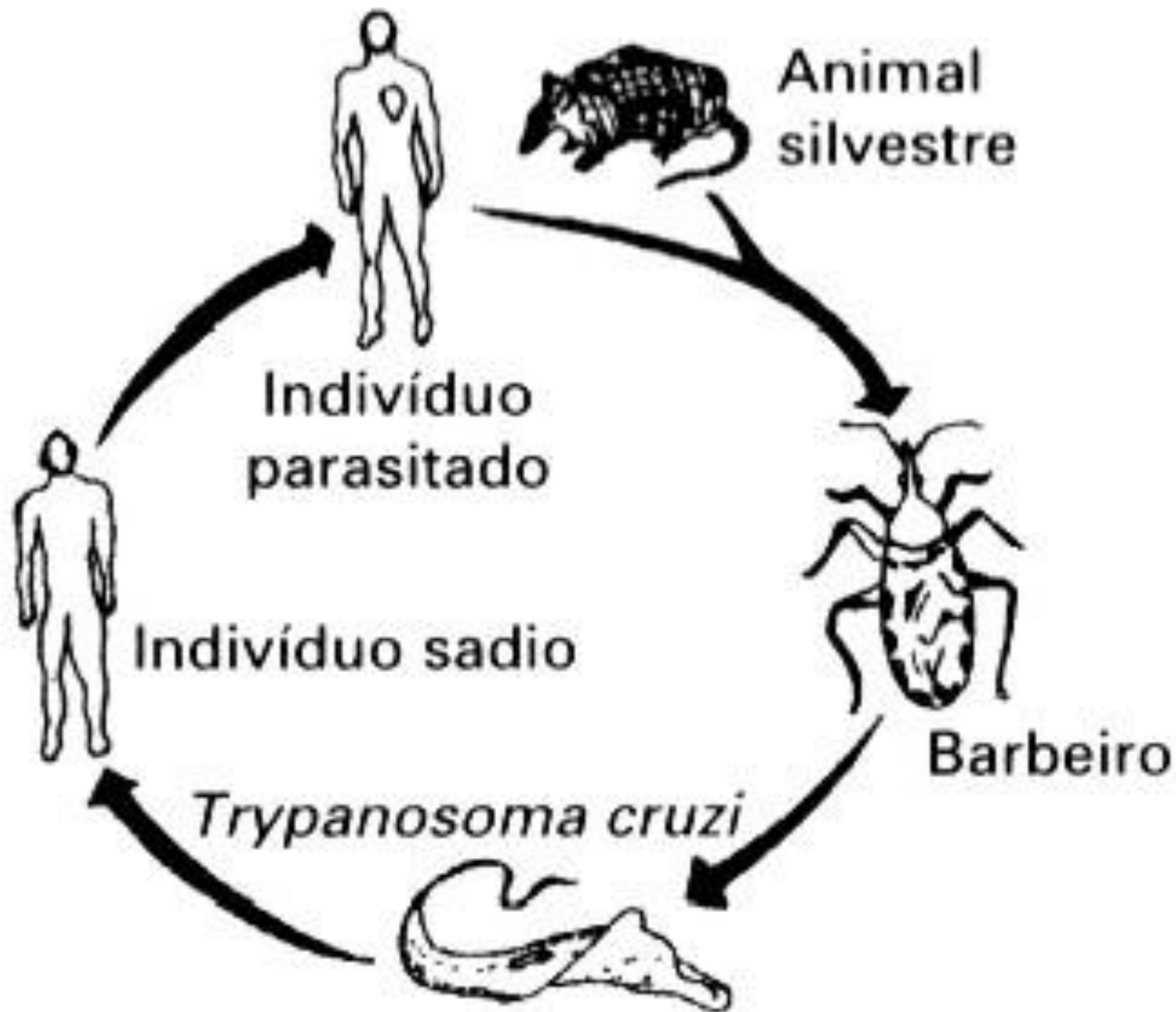
Tripanossomíase ou Doença de Chagas





Trypanosoma cruzi







CACHORRO



GATO



GAMBÁ



TATU



RATO



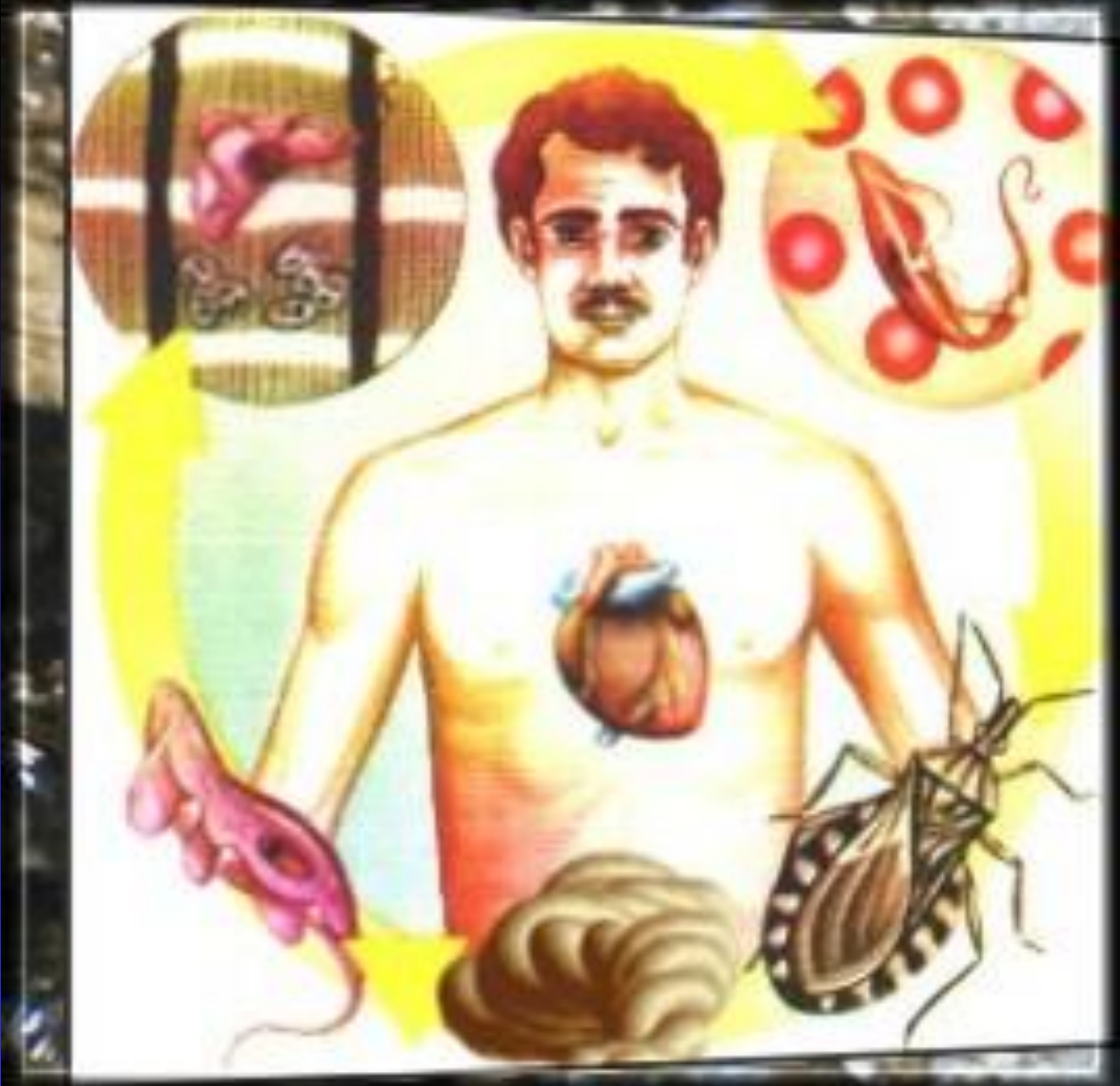
MACACO



OU
HOMEM DOENTE
DE CHAGAS

SÃO

FONTES DE INFECÇÃO





IMAGES

IN
PEDIATRIC
CARDIOLOGY





Sinal de Romanã





IMAGES

in
PEDIATRIC
CARDIOLOGY

Cardiomegalia

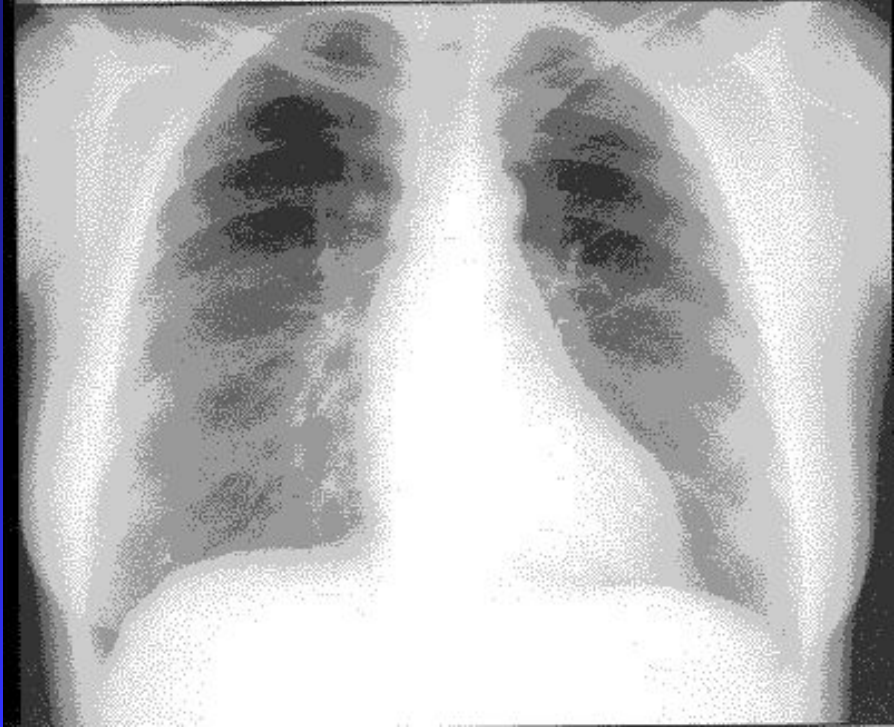
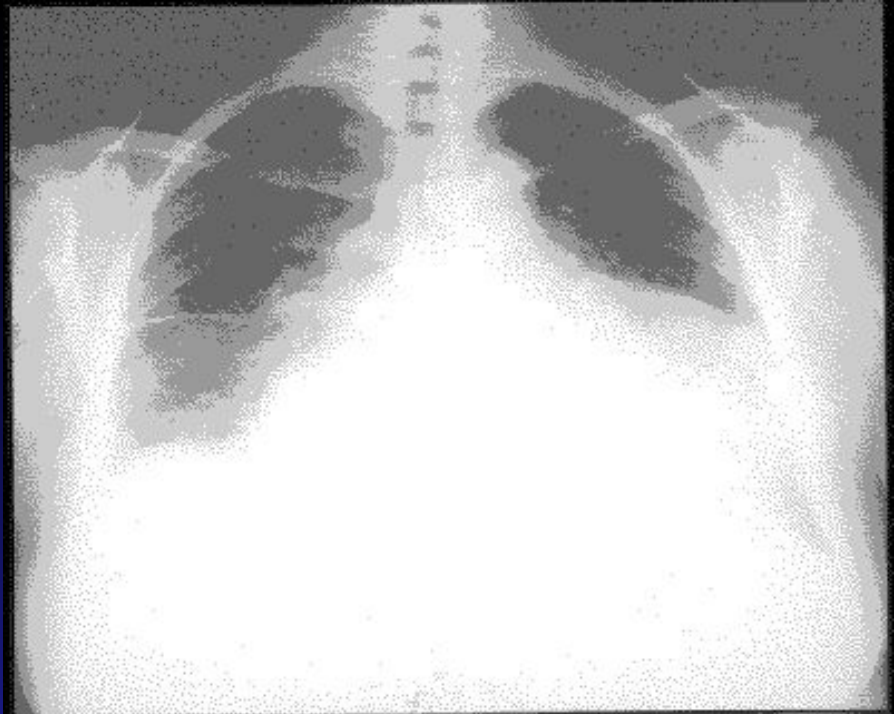




Fig. 2 - Radiografia de tórax em PA demonstrando cardiomegalia global.









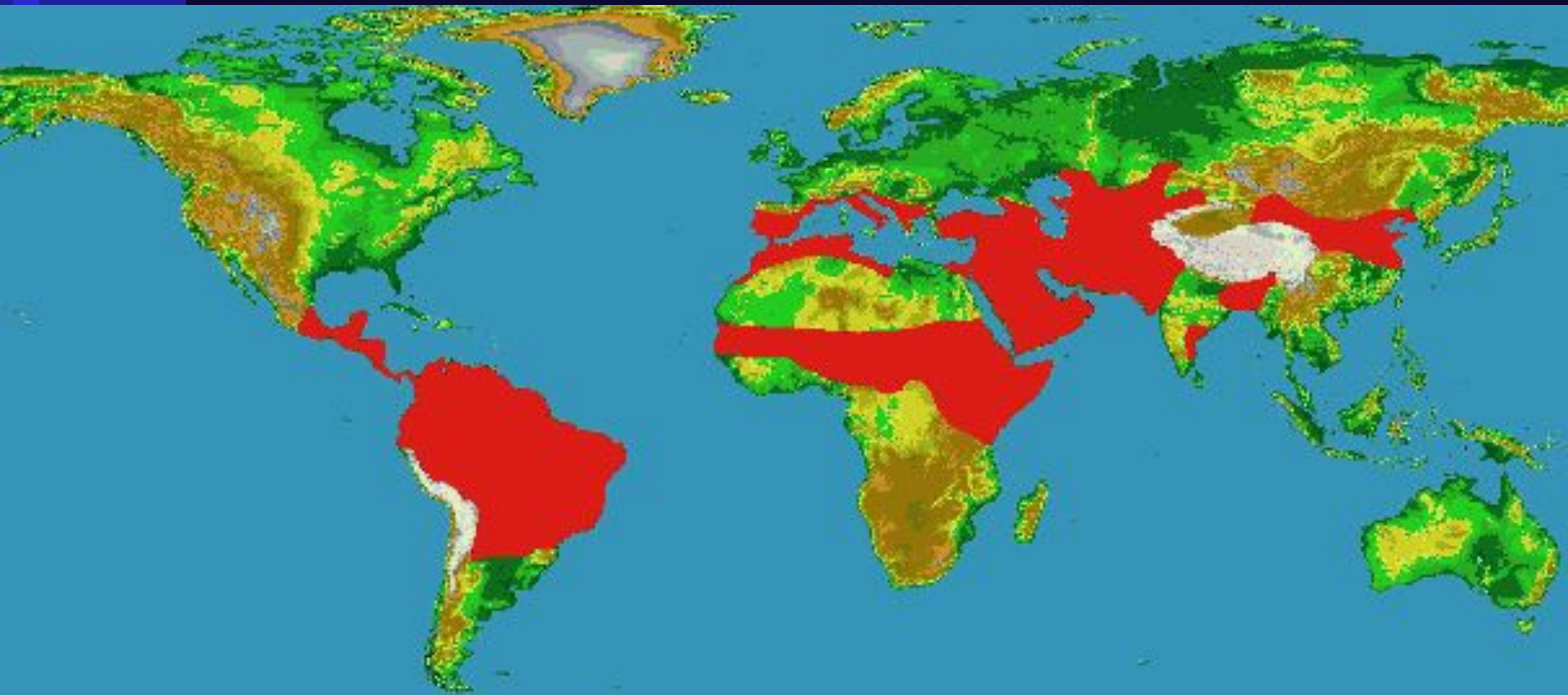






Santa Mãe de DEUS, Fui Clonado!

www.jacobblue.cjb.net



Leishmaniose tegumentar











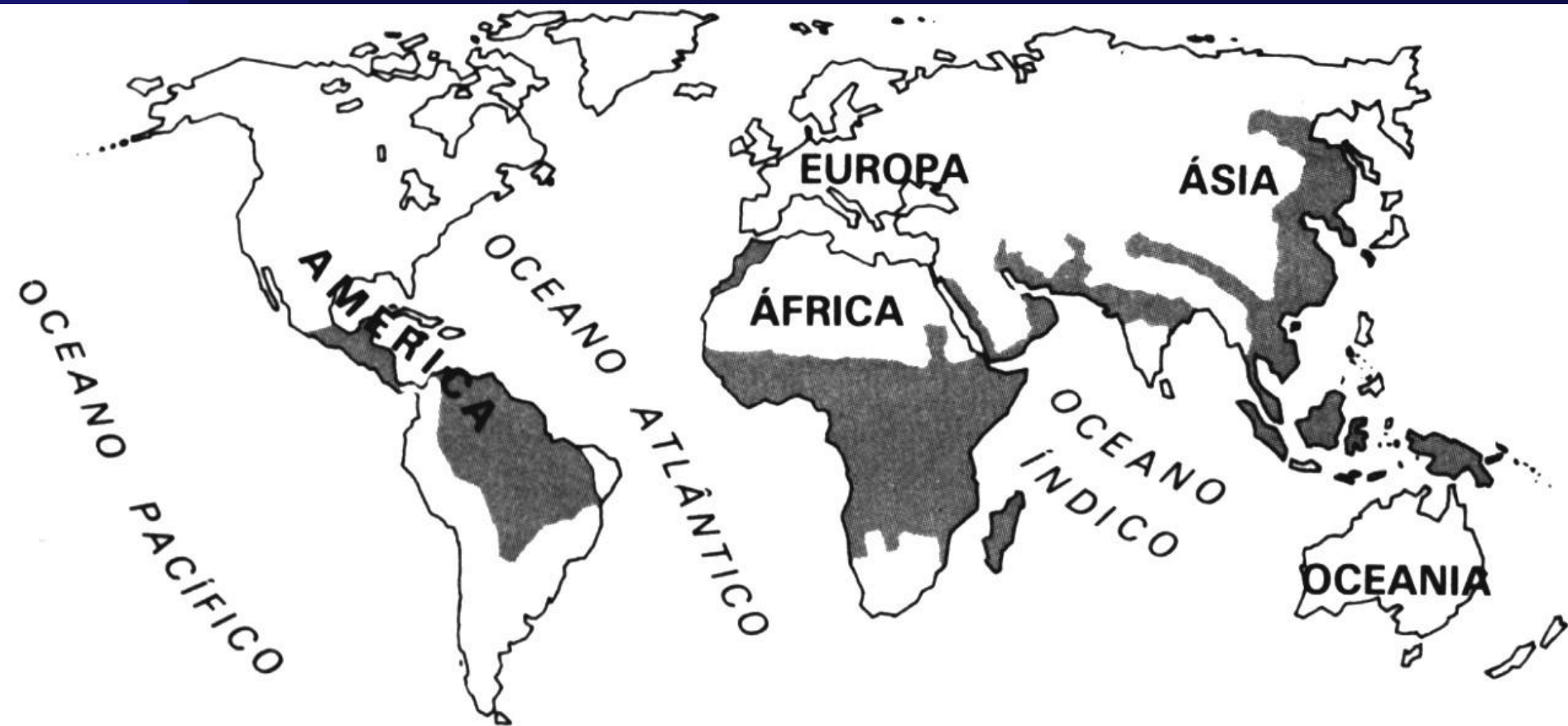




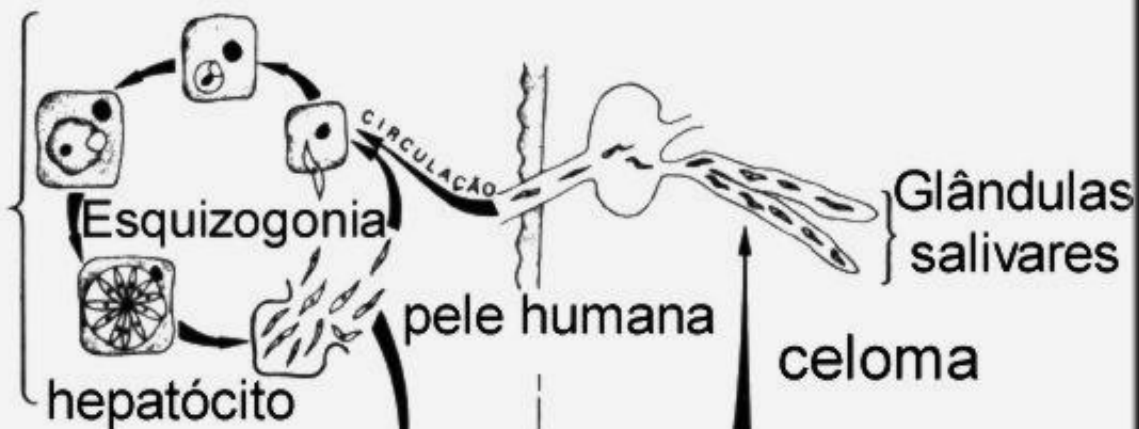




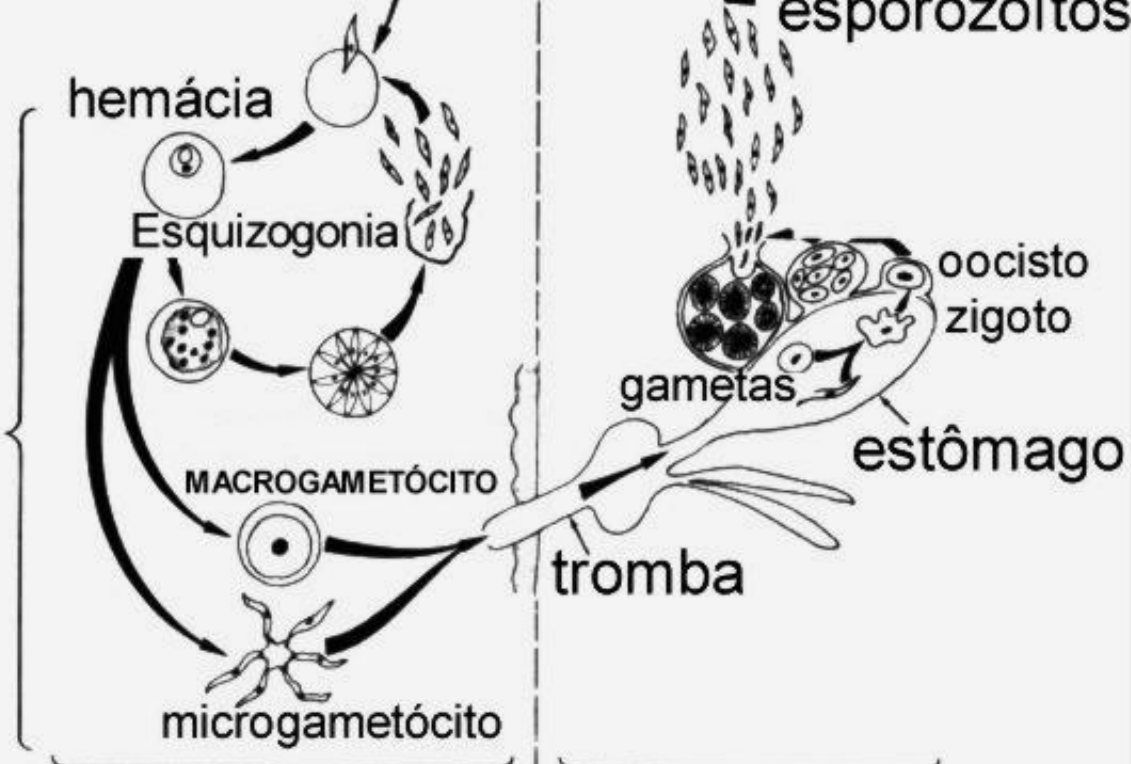
Malária



Ciclo exo-eritrocítico
(Sistema Retículo Endotelial)



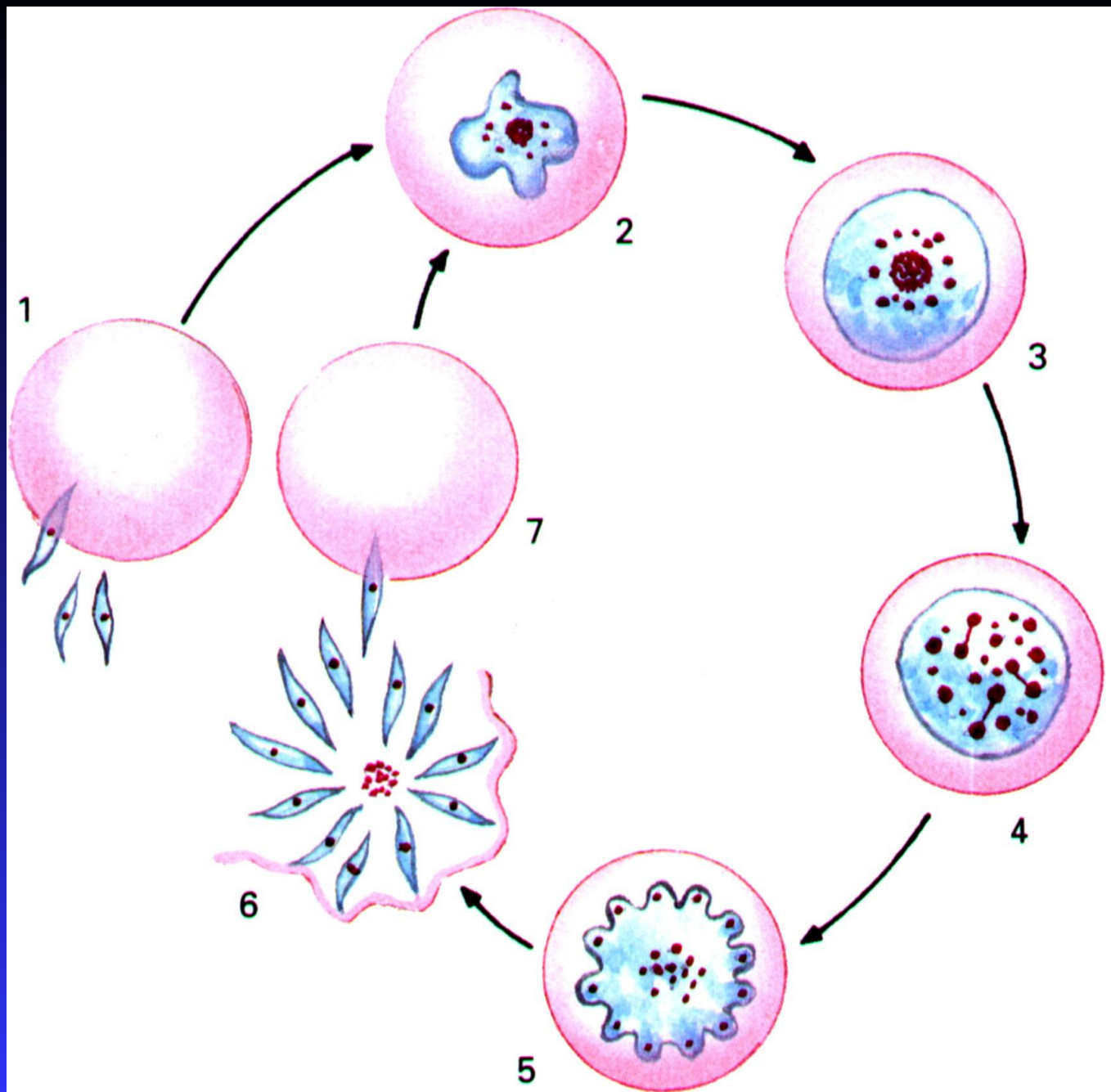
Ciclo eritrocítico
(nas hemácias)



Homem

Anopheles





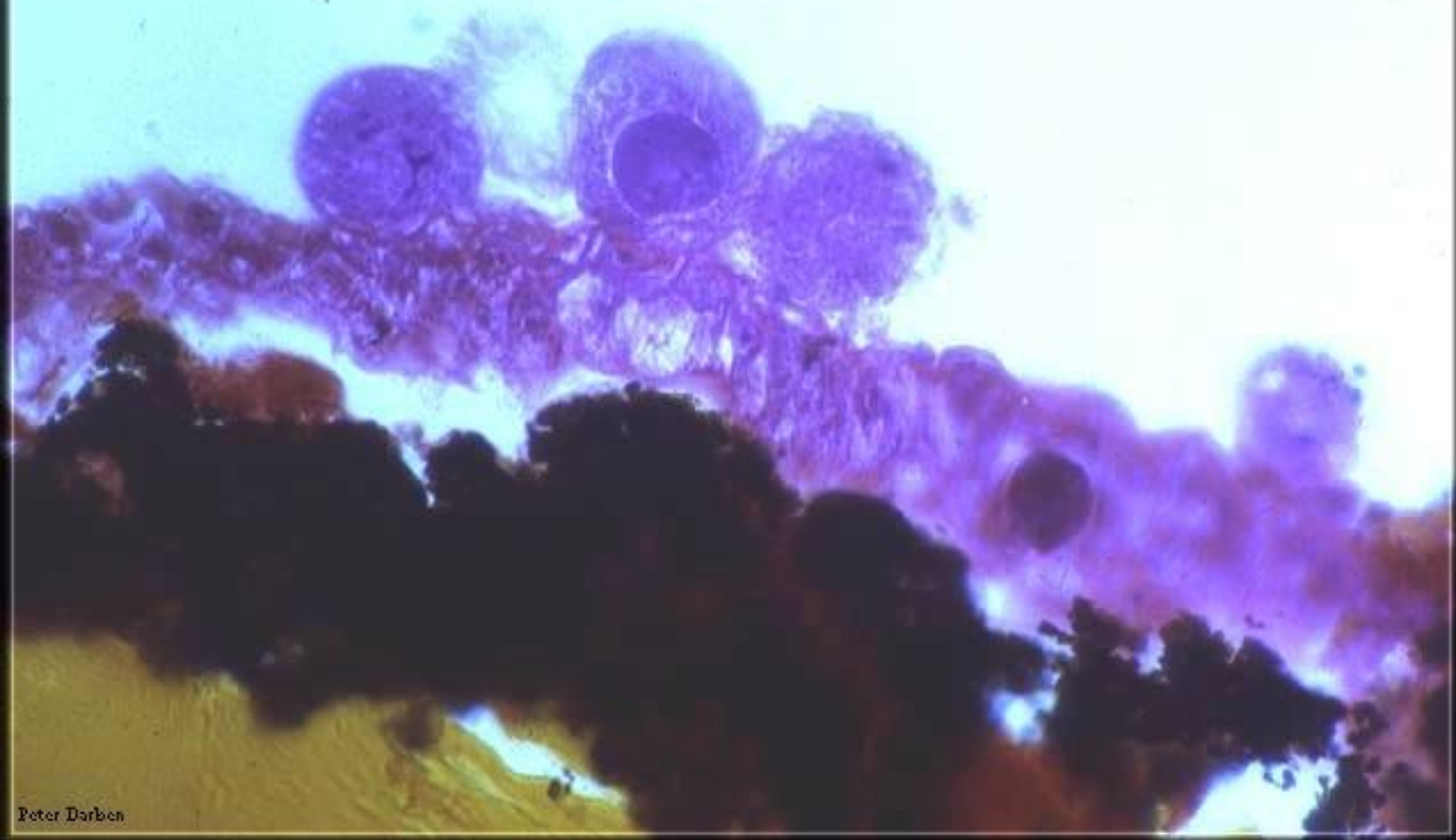
Plasmodium vivax

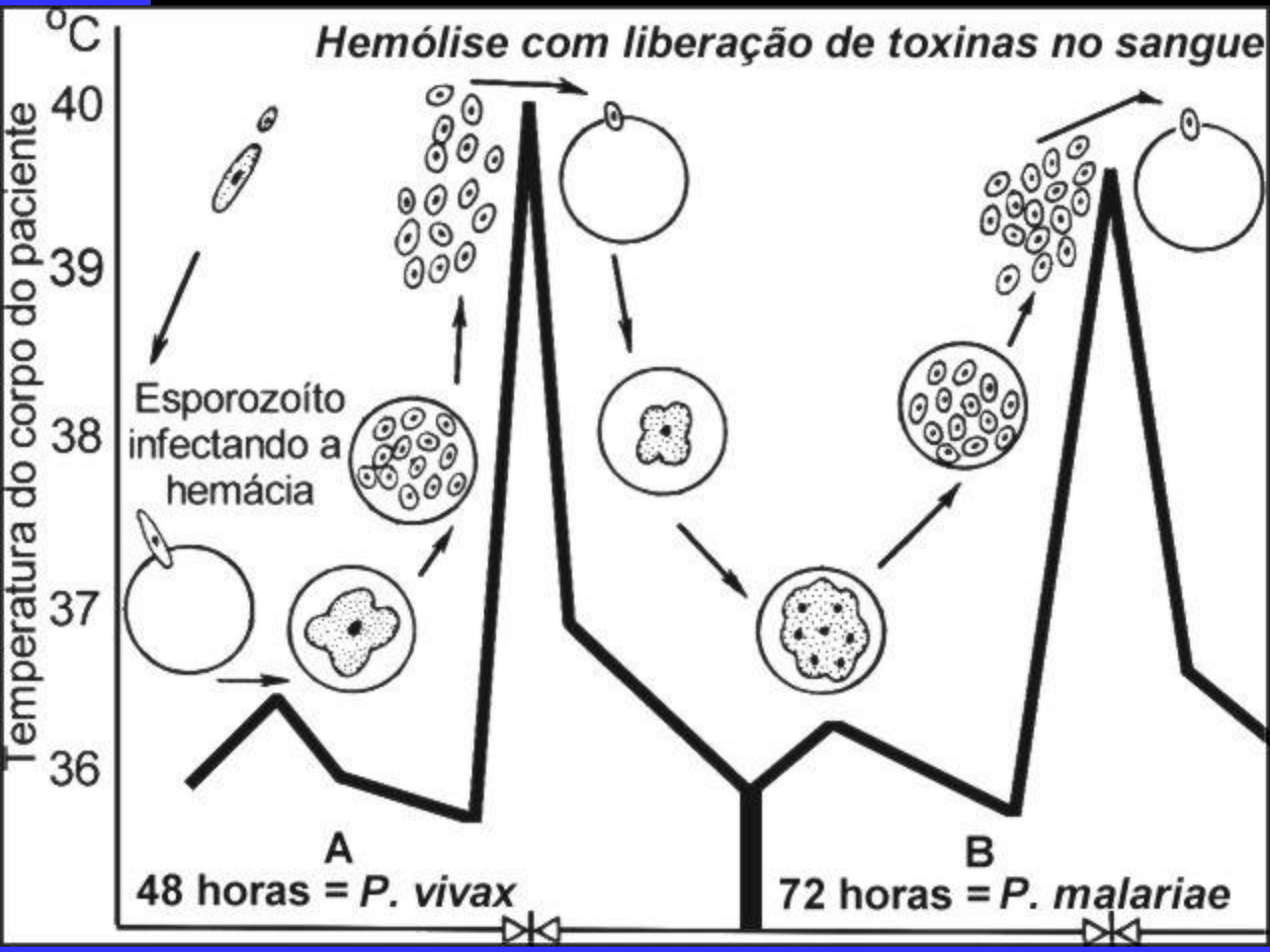
Exflagellation



Plasmodium sp.

Oocysts on Mosquito Gut



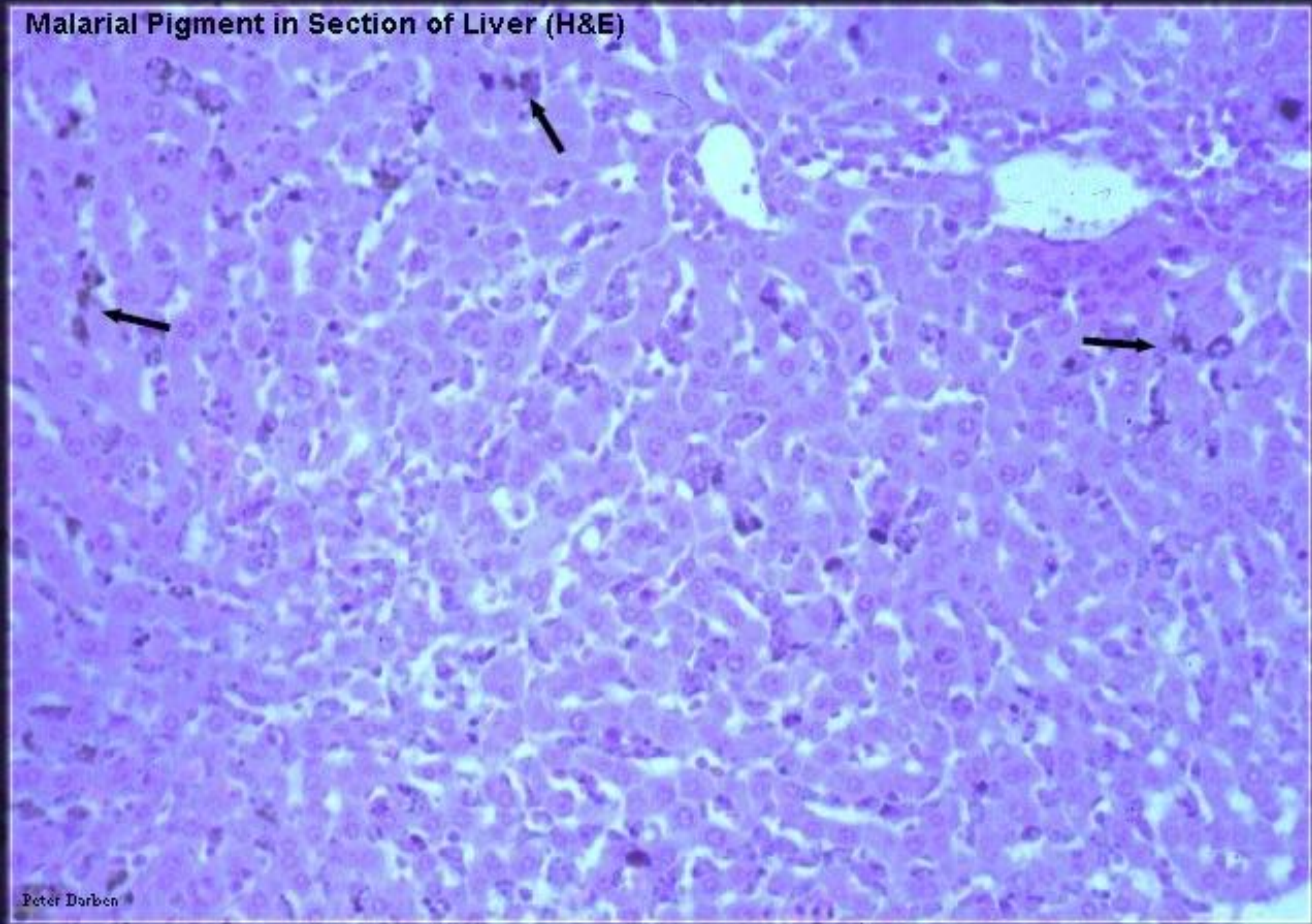


Plasmodium falciparum

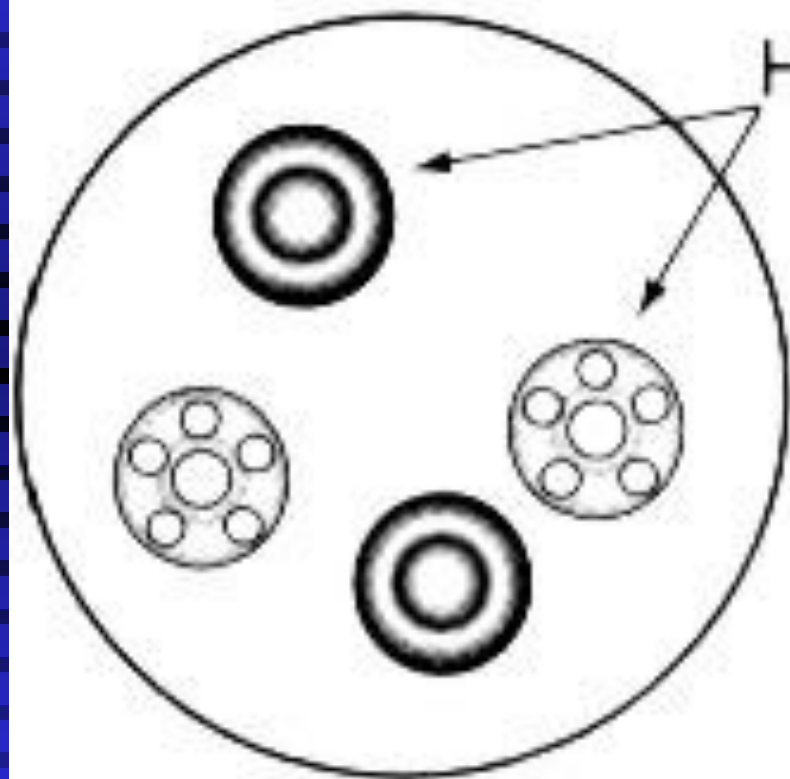
Cerebral Malaria (H&E)



Malarial Pigment in Section of Liver (H&E)

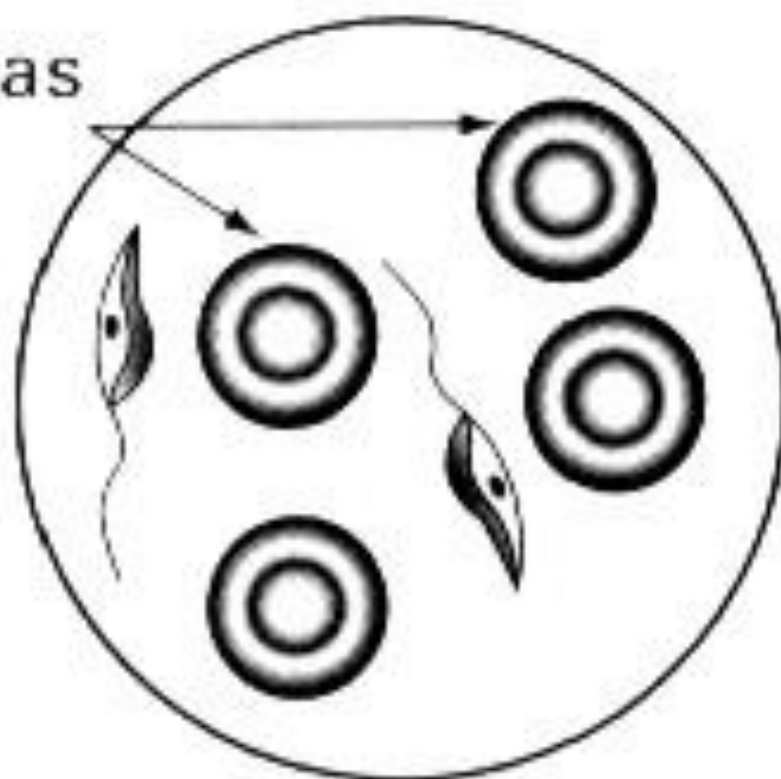


Paciente I

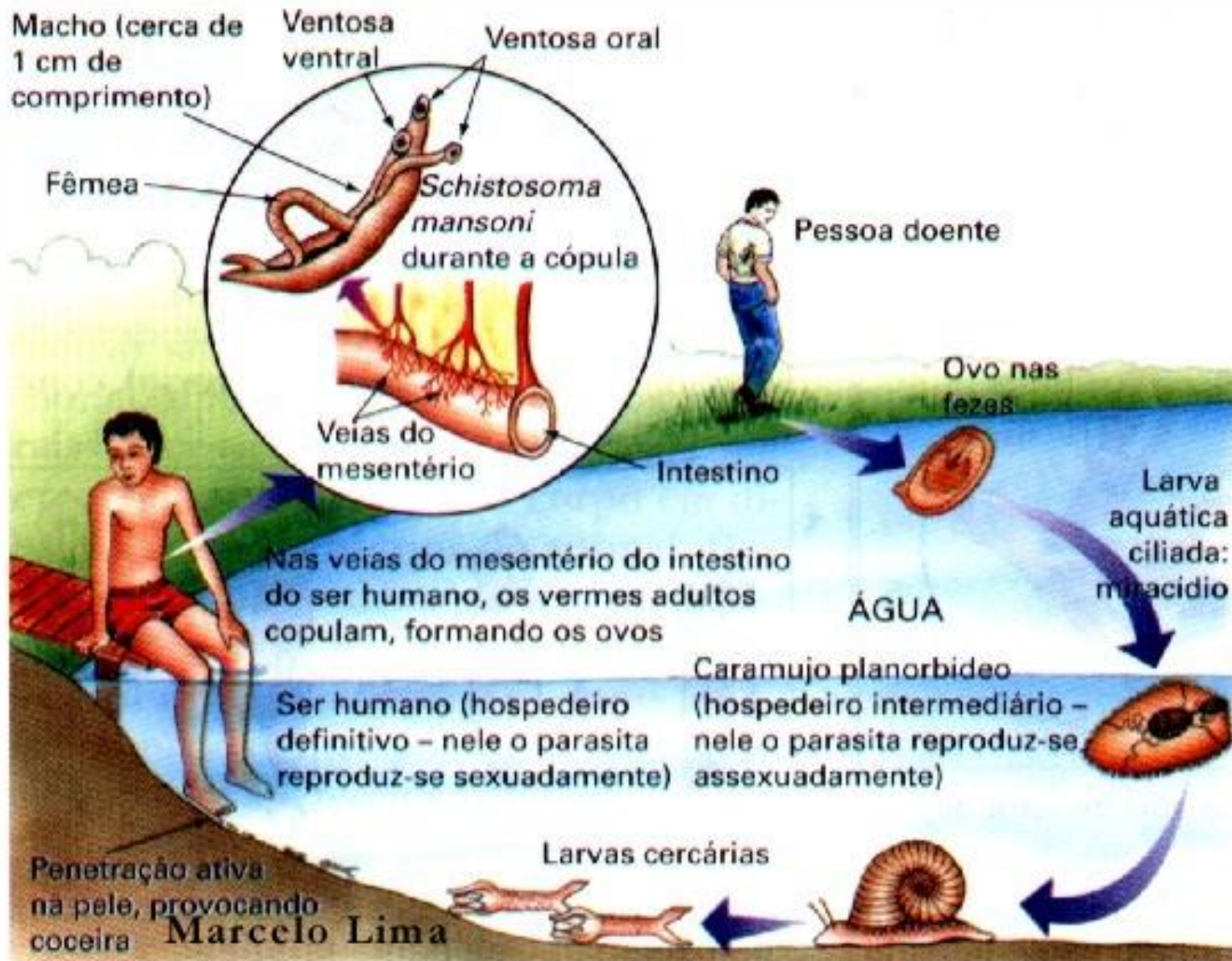


Hemácias

Paciente II

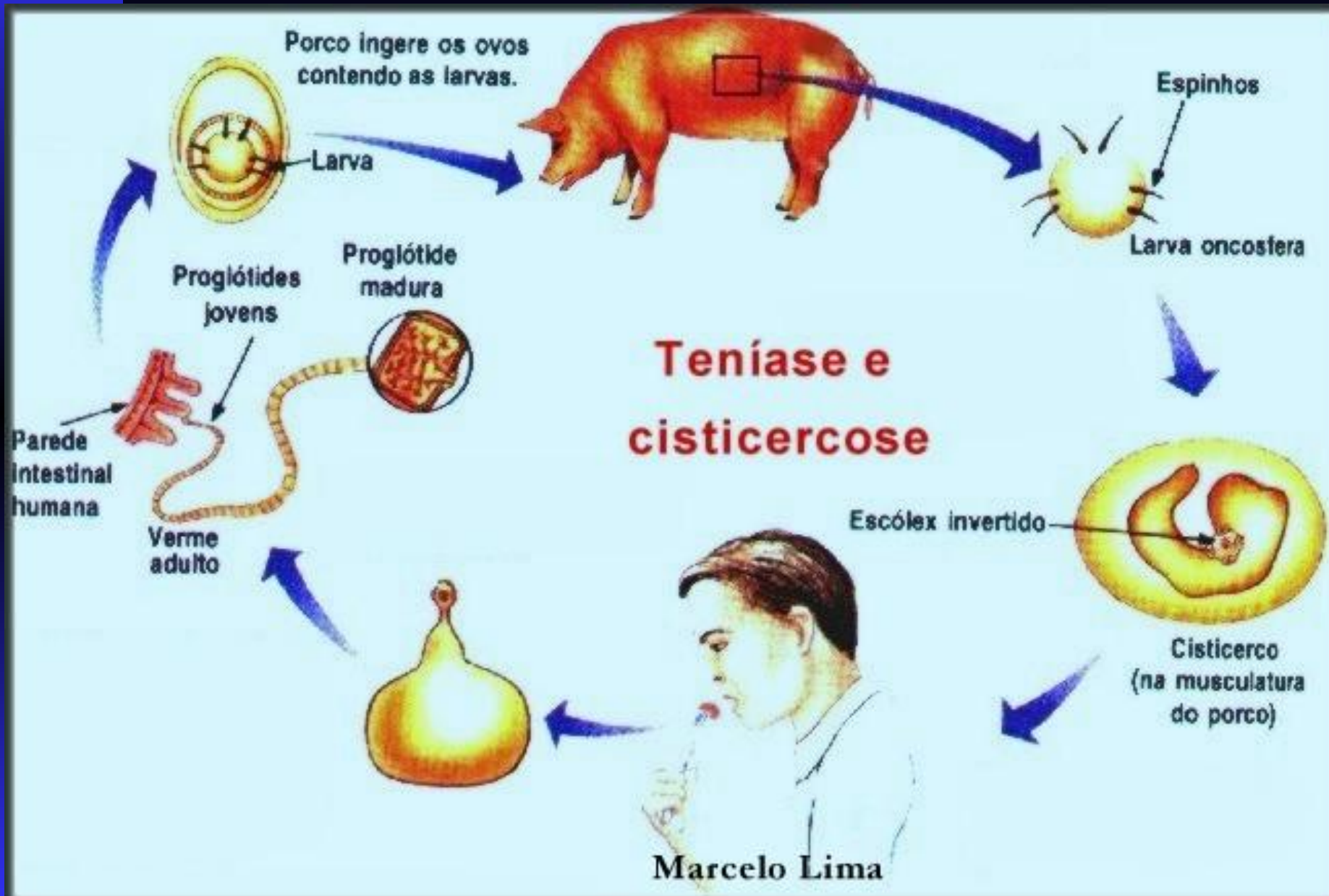


CICLO DO ESQUISTOSSOMO





Taenia solium

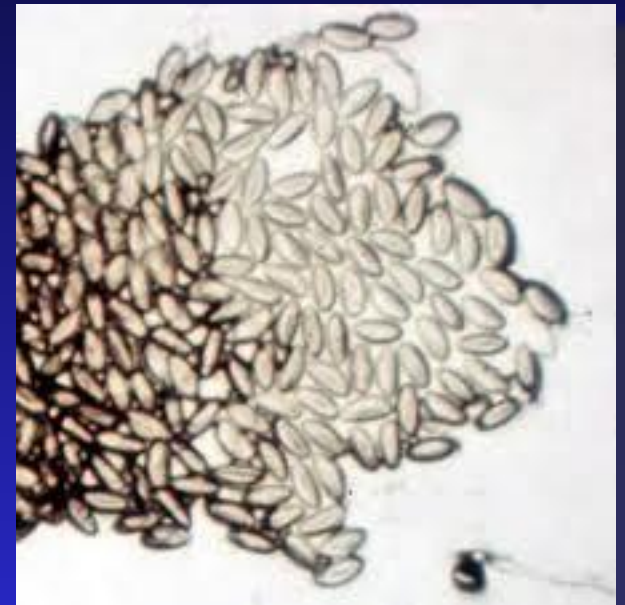


NEUROCYSTICERCOSIS



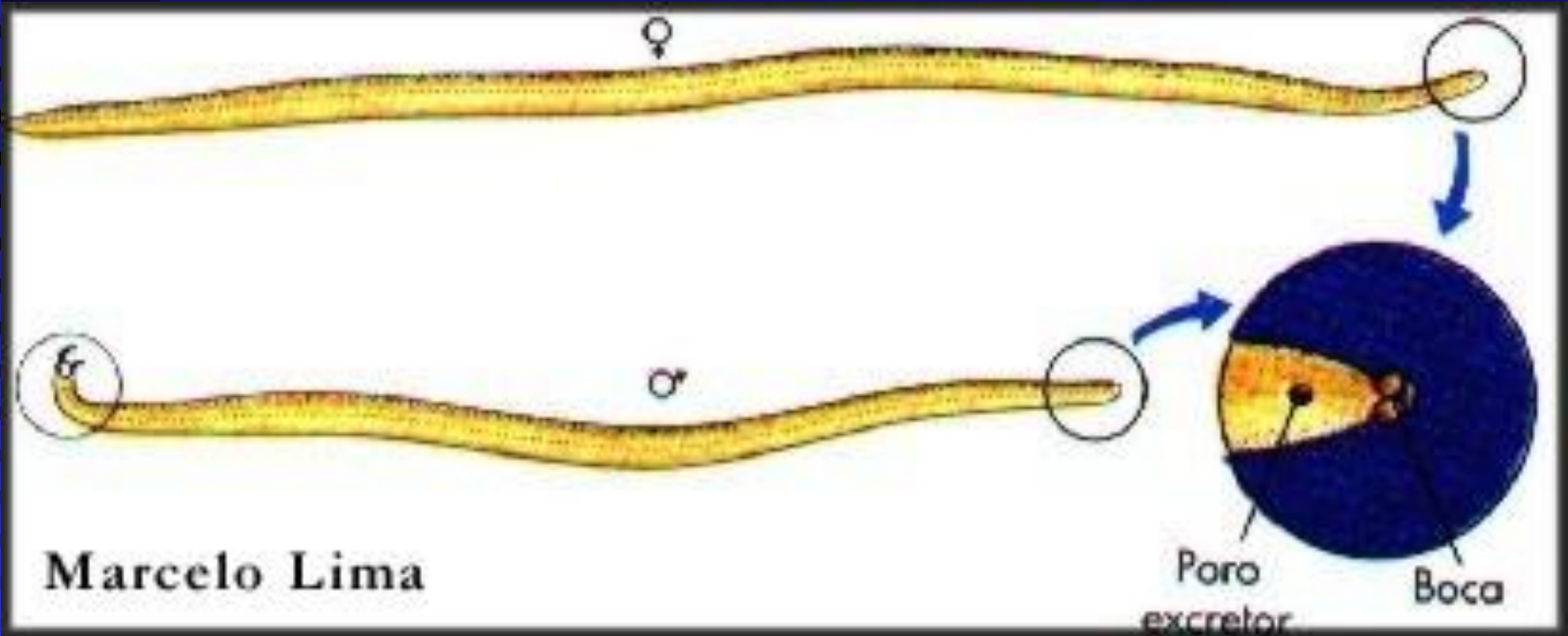
Marcelo Lima

Oxiurose – *Enterobius vermicularis*

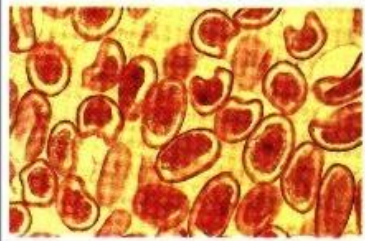
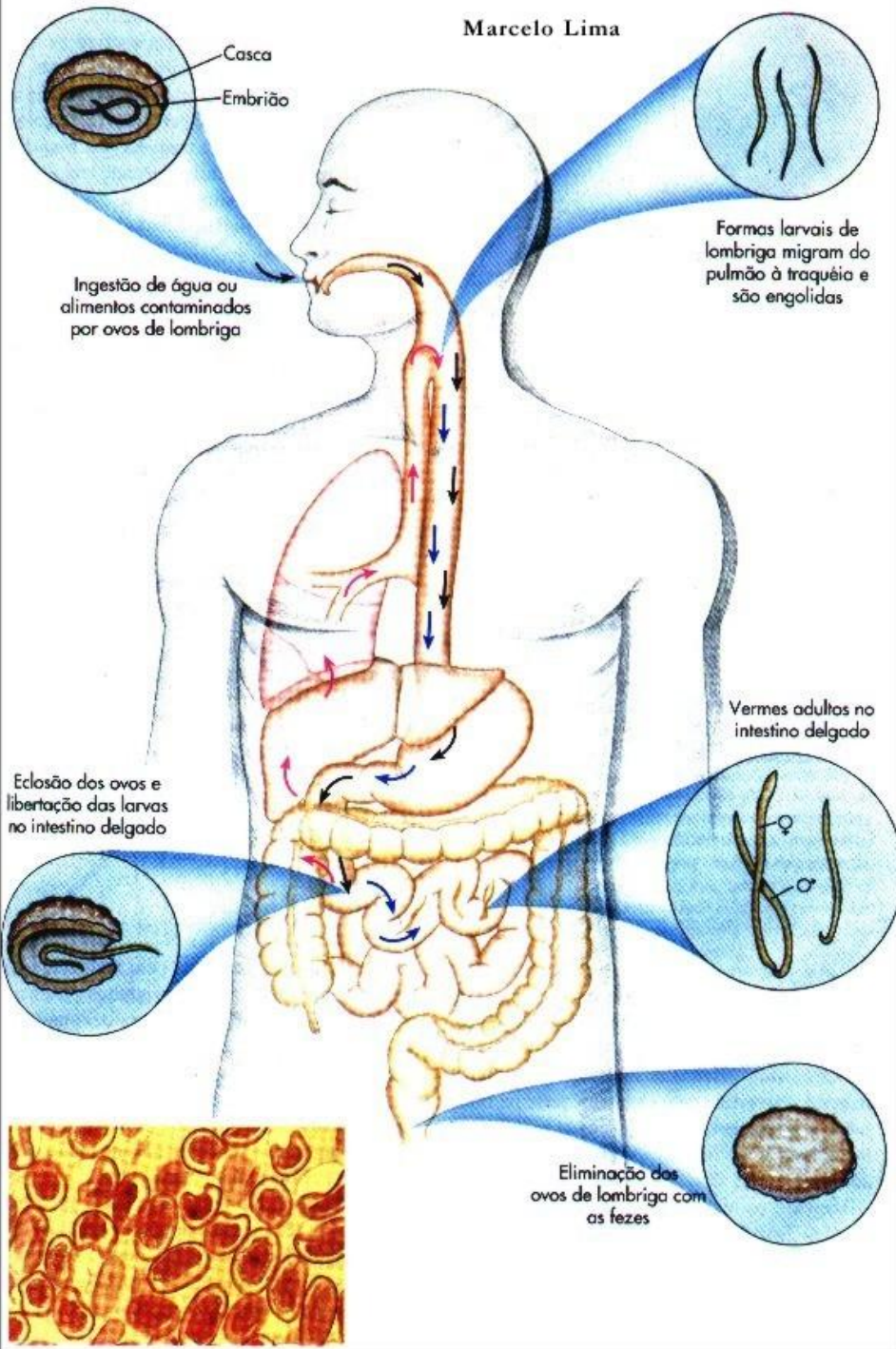




Ascaris lumbricoides











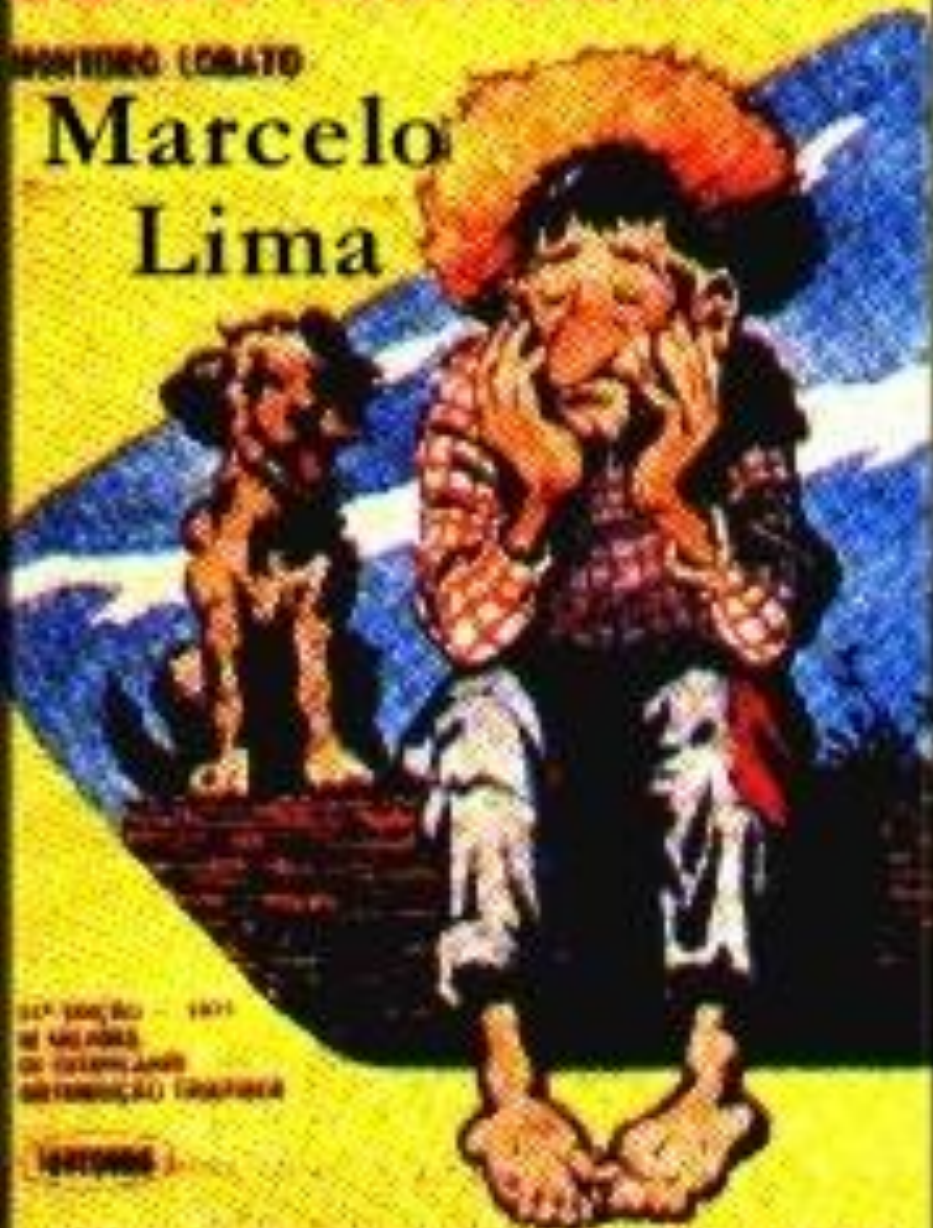


Massive Ascaris infection in child. A large bolus of roundworms expelled following anthelmintic treatment.

JECA-TATUZINHO

MONTEIRO LOBATO

Marcelo
Lima



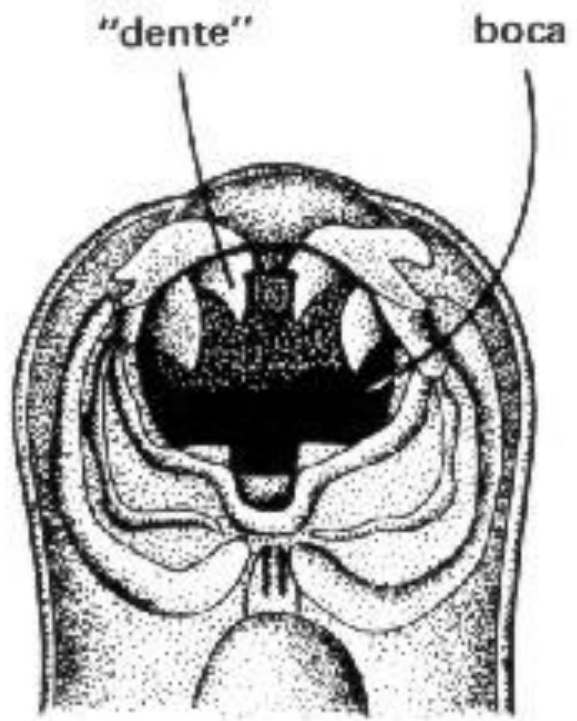
167 100,00 — 1971
16 MILHÕES
DE EXEMPLARES
DISTRIBUIÇÃO GRATUITA

1000000

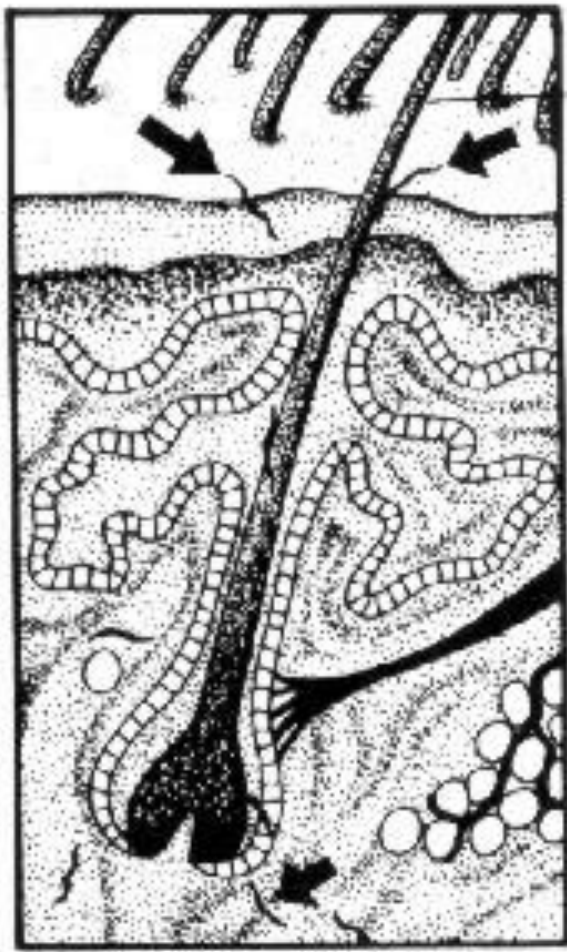
A OBRA DE MAIOR DIVULGAÇÃO EM TODO O BRASIL

ANCILOSTOMOSE





A



B

pêlo
epiderme

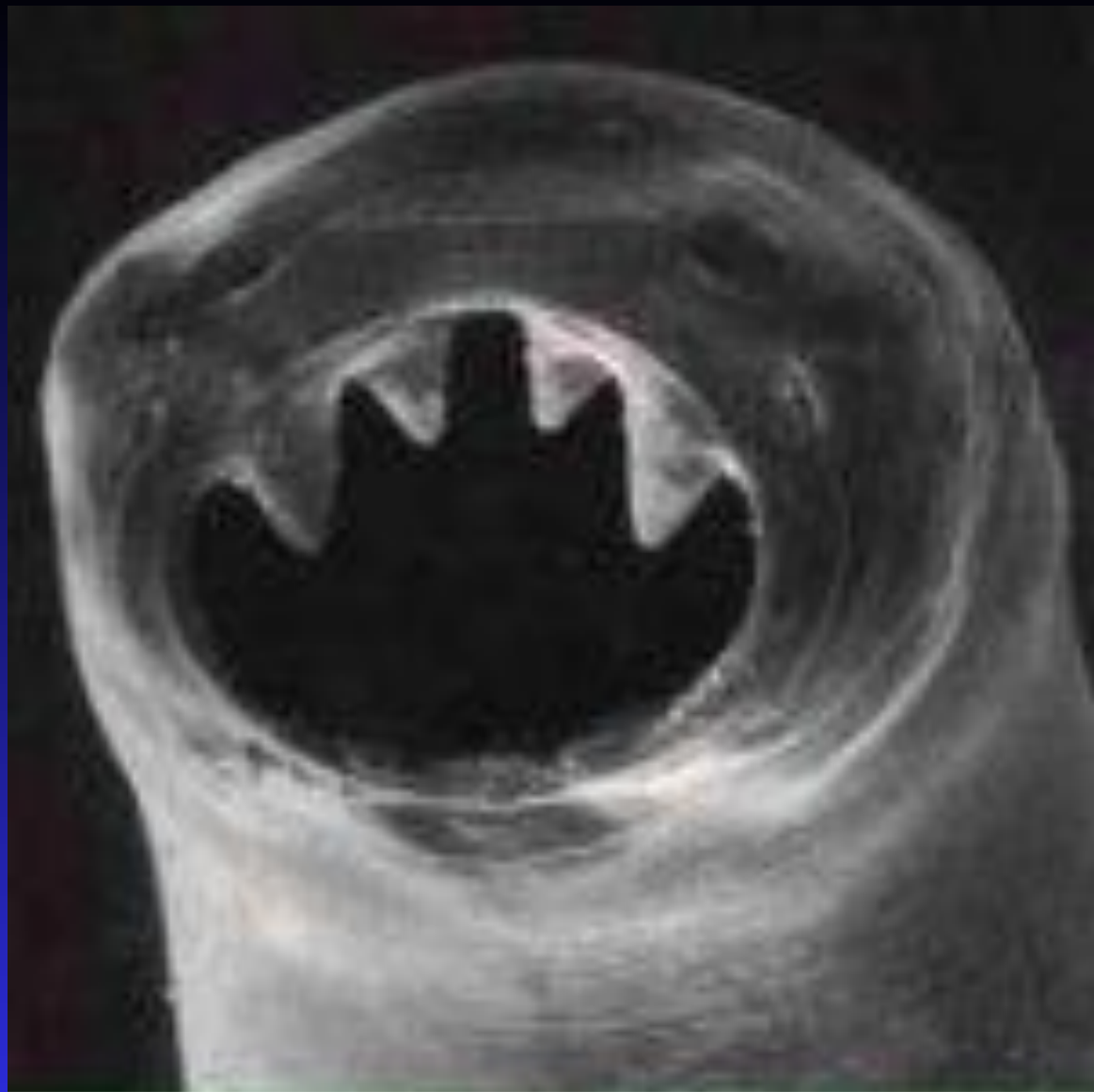
parede do
intestino



C

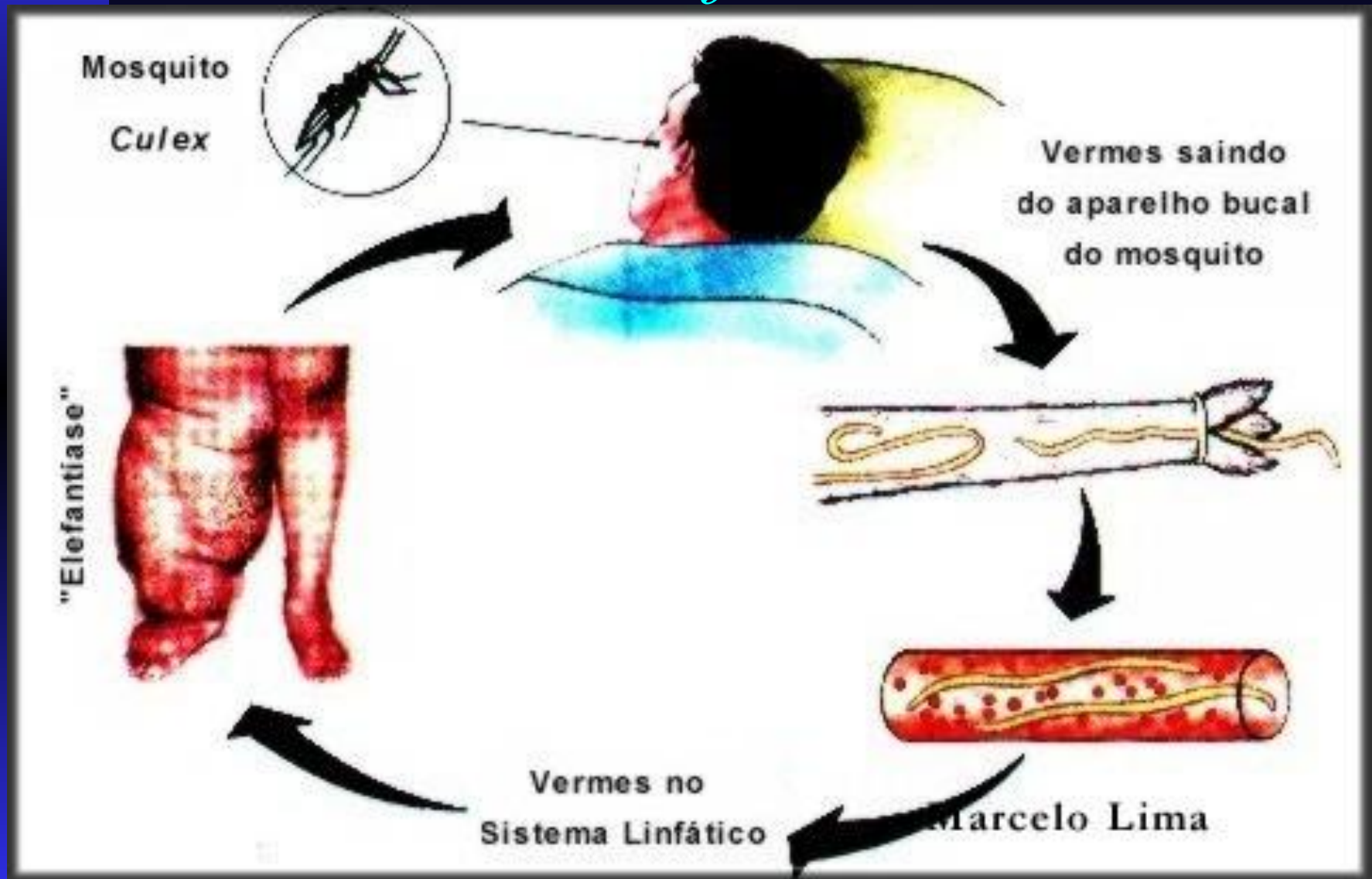
Ancylostoma duodenale

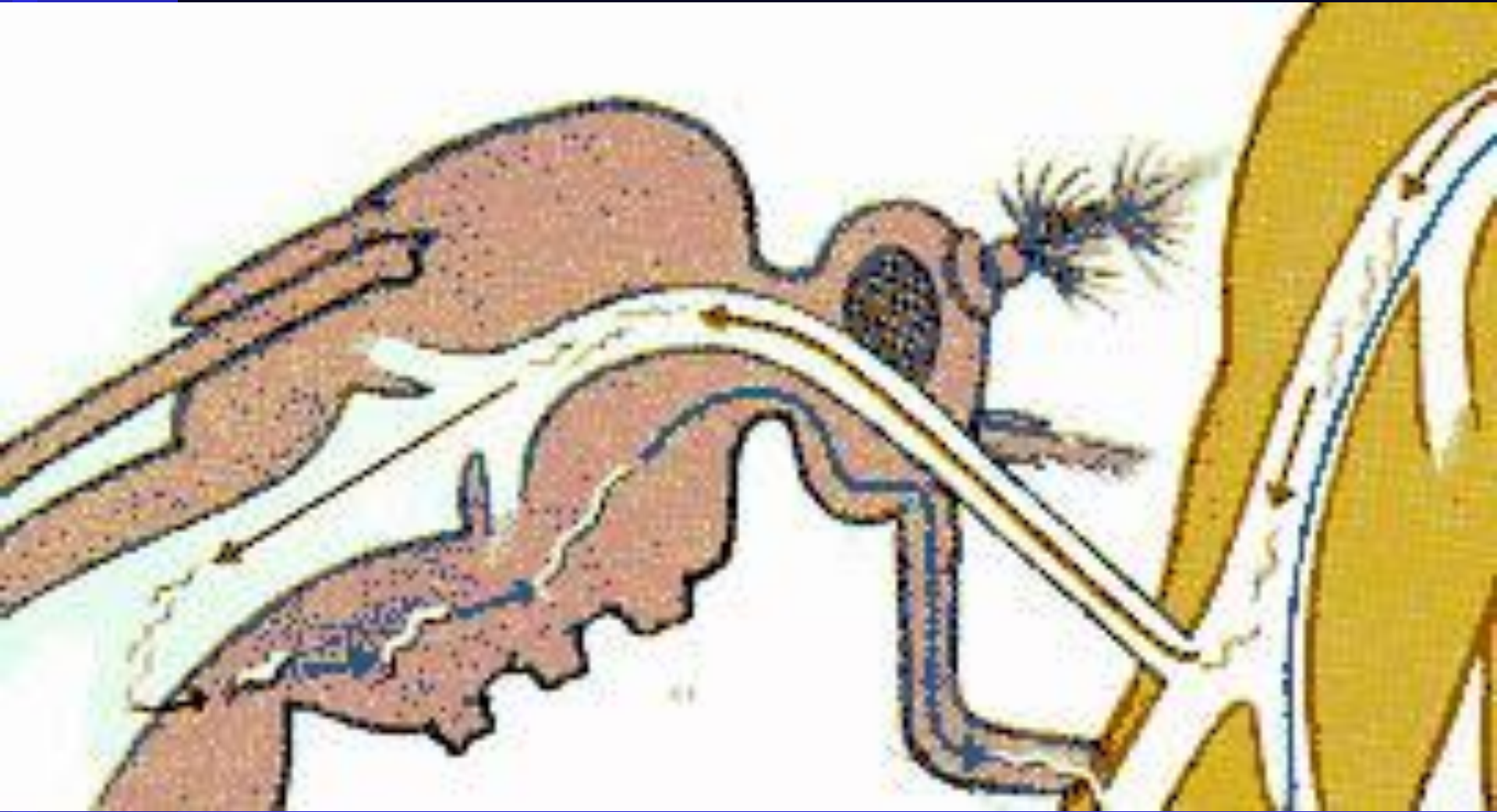




Hookworm

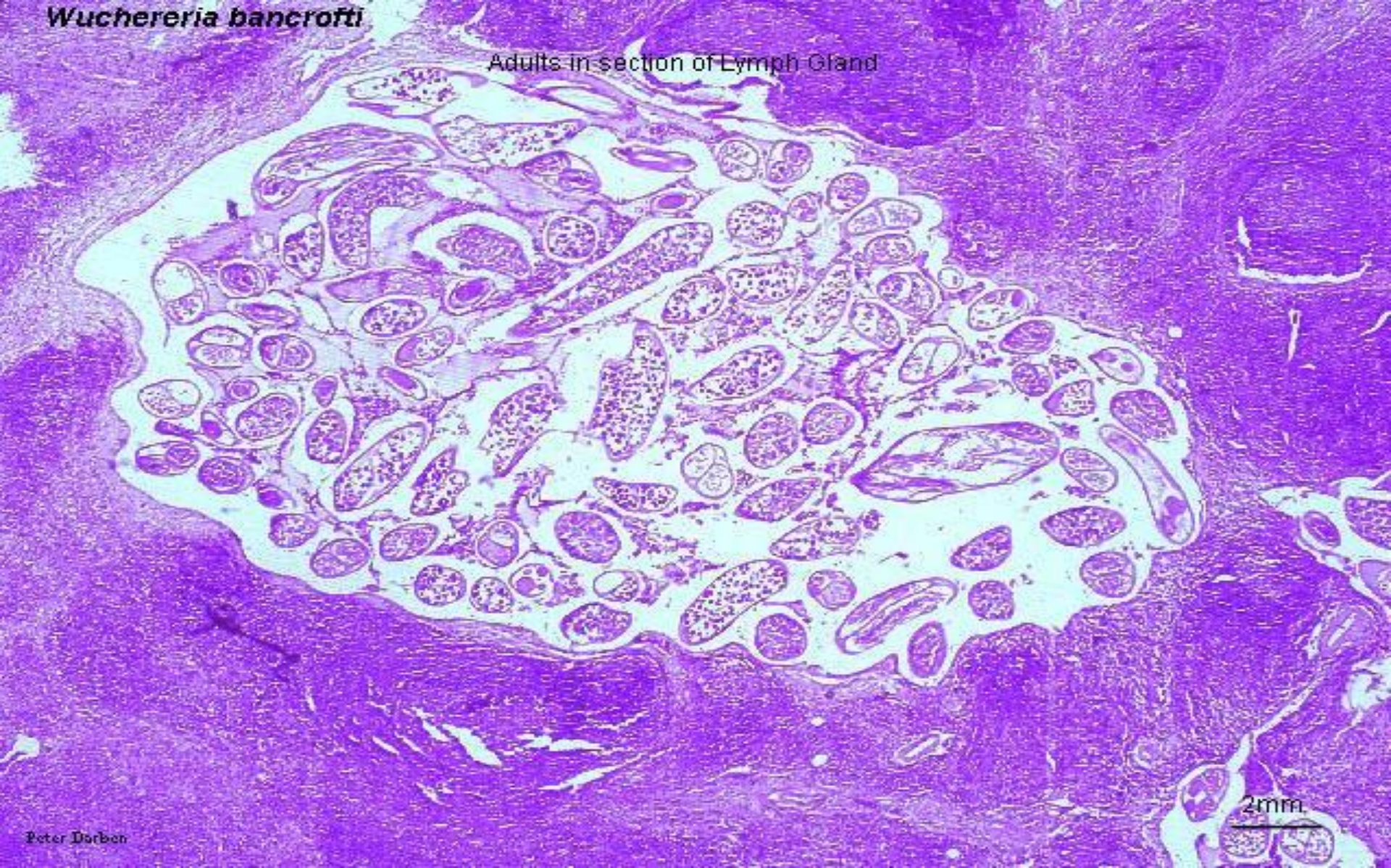
Wuchereria bancrofti - elefantíase





Wuchereria bancrofti

Adults in section of Lymph Gland



Peter Darben

Obstrução dos vasos linfáticos

BANCROFTOSE



PESSOA COM ELEFANTÍASE



Marcelo Lima



**Wuchereria bancrofti - (bancroftian filariasis)
(Elephantiasis)**















Borrachudo - simulídeo



